





## Spinney Cottage, 1 Tudor Close, Middleton-on-Sea

Character house requiring modernisation and updating.



- ▶ Detached Character House
- ▶ Requiring Modernisation and Updating
- ▶ Ground Floor Shower Room/WC
- ▶ Bathroom and Separate WC
- ▶ Generous Plot
- ▶ Sitting Room/Dining Room
- ▶ Kitchen
- ▶ Three First Floor Bedrooms
- ▶ Detached Garage With Garden Room
- ▶ Private Road

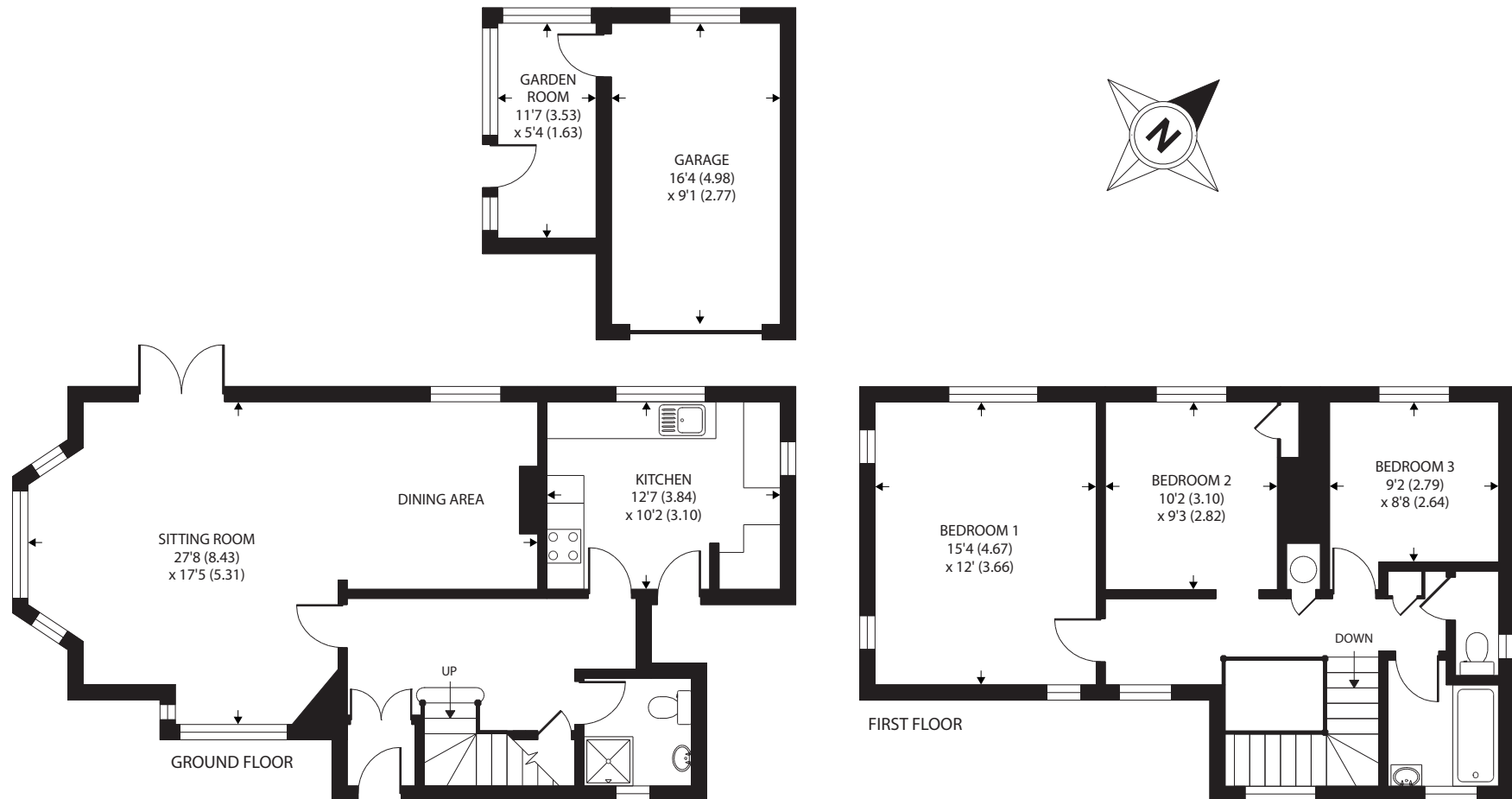
Situated on a generous corner plot is this three bedroom detached character house. Requiring updating and modernisation, the property is also offered for sale with the advantage of vacant possession.

The salient feature of the property are the lovely gardens which are mainly laid to lawn with an array of well established trees and shrubs. The plot measure approximately quarter of an acre in size.

Private Estate Charge: To be confirmed.



APPROX. GROSS INTERNAL FLOOR AREA 1289 SQ FT 119.7 SQ METRES (EXCLUDES GARAGE / GARDEN ROOM)



Agents Note - Our particulars are for guidance only and are intended to give a fair overall summary of the property. They do not form part of any contract or offer, and should not be relied upon as a statement or representation of fact. Measurements, areas and distances are approximate only. Photographs may include lifestyle shots and pictures of local views. No undertaking is given as to the structural condition of the property, or any necessary consents or the operating ability or efficiency of any service, system or appliance. Please ask if you would like further information, especially before you travel to the property.



## Location

Tudor Close is a popular Private road which is situated within approximately quarter of a mile of Middleton-on-Sea village centre. The village of Middleton offers a range of local facilities including Doctors' Surgery, pharmacy, post office, newsagents, convenience store, hardware store. The nearby village of Felpham offers further facilities including sports centre with swimming pool and golf club.

## Directions

From our office in Middleton-on-Sea proceed in a westerly direction for approximately quarter of a mile and turn right into Tudor Close and number 1 will be found on the left hand side.

06/09/17

