

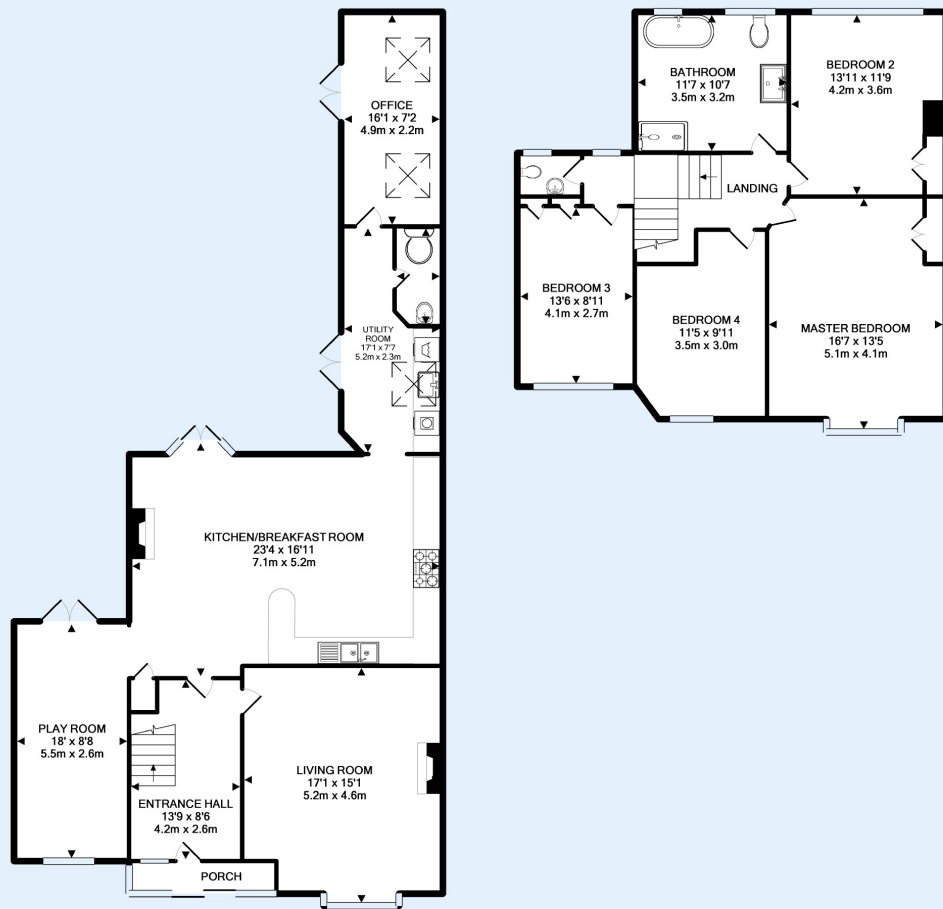


**Henleaze - £850,000**

4 bed semi-detached house

31 Lawrence Grove, BS9 4EL





Made with Metropix ©2018



This substantial and beautifully presented four bedroom semi-detached home is superbly located on the popular Lawrence Grove within an easy level walk of Henleaze High Street and close to Henleaze Infant and Junior Schools.

The property has been lovingly renovated by the current owners, retaining the character of the house and with an exceptional finish. The ground floor consist of a wonderfully light and spacious living room to the front of the property, with polished wood floors and a log burner set on granite, leading through to a lovely open plan kitchen diner including a modern kitchen with solid oak worktops. Off the kitchen is a play room with french doors that open out to the landscaped garden, and to the rear of the property the outhouse has been converted and connected to the main house, providing a great office space and a downstairs WC. On the first floor are four spacious double bedrooms and a beautifully appointed family bathroom. Outside the front of the property has ample parking for two cars, to the rear of the property is a low maintenance landscaped garden.



### Westbury on Trym Branch

73 Westbury Hill, Westbury-on-Trym,  
Bristol, BS9 3AD

Call: 0117 9621973

Mail: [westburysales@oceanhome.co.uk](mailto:westburysales@oceanhome.co.uk)

Search: [oceanhome.co.uk](http://oceanhome.co.uk)

References to the Tenure of a Property are based on information supplied by the Seller. The Agent has not had sight of the title documents. Lease details, service ground rent (where applicable) are given as a guide only and should be checked and confirmed by your solicitor prior to exchange of contracts.