

The **Frost** Partnership

Beaconsfield Office: T: 01494 681234 E: beaconsfield@frostweb.co.uk

Dean Farm, Long Bottom Lane, Jordans, Beaconsfield, Bucks, HP9 2UT

Guide Price £5,000,000 (Freehold) DRAFT DETAILS



- Historic listed country house
- Additional outbuildings and cottages
- In all 6.4 acres (+ additional 3.7 acres leasehold)
- In need of updating
- Wonderful listed 120' barn
- M40 (J2) 2 miles

frostweb.co.uk



First Floor



Ground Floor

TheFrostPartnership

Dean Farm

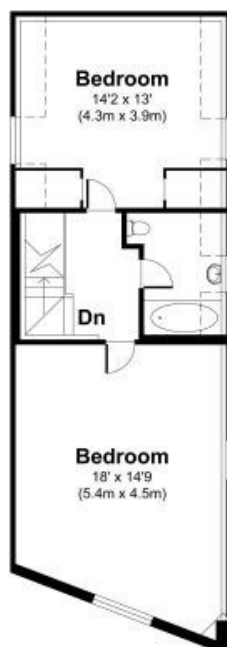
FROSTBF12670-F: THIS IMAGE IS ILLUSTRATIVE ONLY - NOT TO SCALE. COPYRIGHT: THE IMAGE TAILOR LTD. 2017.



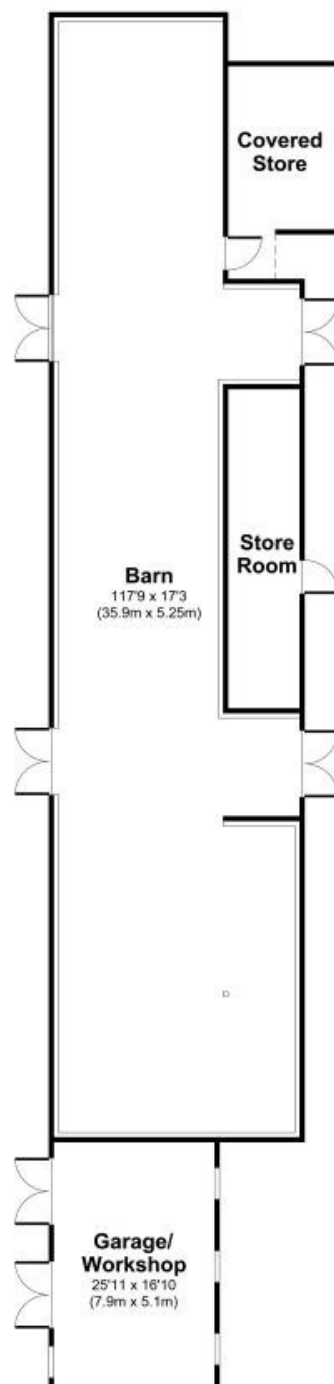
Old Dairy Cottage



Ground Floor



First Floor



Tythe Bran

TheFrostPartnership

Dean Farm

FROSTBF12671-F: THIS IMAGE IS ILLUSTRATIVE ONLY - NOT TO SCALE. COPYRIGHT: THE IMAGE TAILOR LTD. 2017.

Historic listed country house in need of updating situated in a tranquil semi-rural location approximately mid-way between Beaconsfield and Gerrards Cross.

Beaconsfield about 3 miles, M40 Junction 2 about 2 miles, Seer Green and Jordans station (Chiltern mainline trains to London Marylebone) about 0.25 miles, Central London about 28 miles.

MAIN FORMER FARMHOUSE Reception hall, three reception rooms, four/five bedrooms, bathroom, separate WC.

ANNEXE WING Comprising two bedrooms, two bathrooms, sitting room, kitchen/breakfast room.

DEAN FARM COTTAGE Open plan sitting room/dining room, kitchen, two bedrooms, bathroom.

OLD DAIRY COTTAGE Bed/sitting room, en suite shower room, kitchenette.

LISTED TITHE BARN

LISTED GRANARY

GARDENER'S STUDIO

Integral double garage, gardens and informal grounds and paddocks, in all 6.4 acres plus additional 3.7 acres leasehold.



Special Note: For clarification, we wish to inform prospective purchasers that we have prepared these sale particulars as a general guide. We have not carried out a detailed survey, nor tested the service appliances and specific fittings. Room sizes should not be relied upon for carpets and furnishings.

Whilst these particulars are believed to be correct they are not guaranteed by the vendor or the vendor's agent 'The Frost Partnership' and neither does any person have authority to make or give any representation or warranty on their behalf. Prospective purchasers must satisfy themselves by inspection or otherwise as to the correctness of each statement contained in these particulars. All measurements are approximate and the particulars do not constitute, or form part of, an offer or a contract.