

# The **Frost** Partnership

Beaconsfield Office: T: 01494 681234 E: [beaconsfield@frostweb.co.uk](mailto:beaconsfield@frostweb.co.uk)

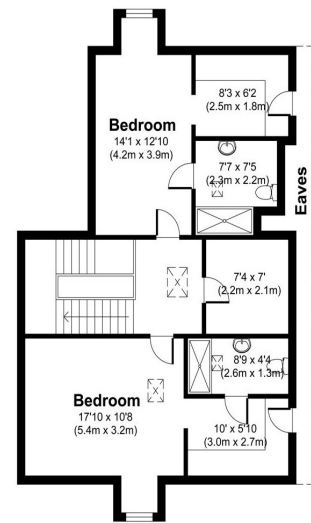
**Show Home, 2 Woodlands Glade, Beaconsfield, Buckinghamshire, HP9 1JZ**

**Asking Price £3,150,000 (Freehold) DRAFT DETAILS**

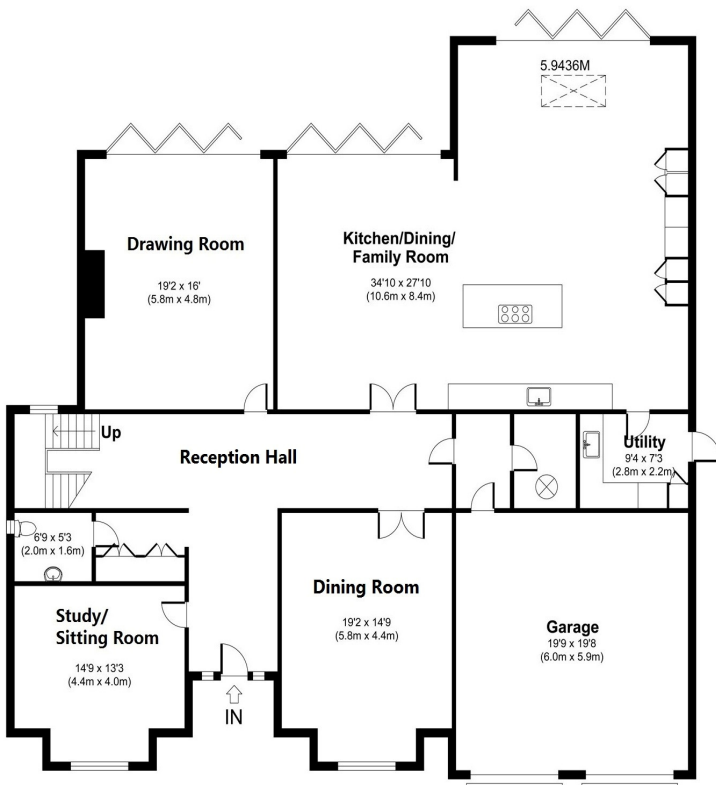


- Substantial family house, c 5,400 sq ft
- Wonderful south west aspect rear garden
- New show home just completed
- Quite exceptional specification
- 5 bedrooms/5 bathrooms
- Close to New Town shops and station

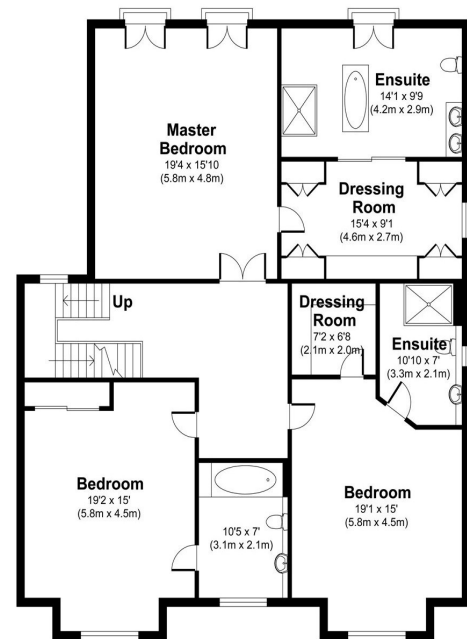
[frostweb.co.uk](http://frostweb.co.uk)



Second Floor



Ground Floor



First Floor

# Woodlands Glade, Beaconsfield

Total area approx 5,400 sq ft



**NEW SHOW HOME. A quite exceptional detached five bedroom new family house by Halamar Developments situated in a quiet residential cul de sac yet within a short level walk of Beaconsfield New Town and station. In all c 5,400 sq ft.**

### **THE PROPERTY**

Built by Halamar Developments to a very high specification which is probably second to none, the attention to detail and careful planning of the accommodation can only be highly commended. This quite exceptional new show house has just been completed and is now available for viewings by prior appointment.

The sumptuous accommodation is arranged over three floors (first and second floors are concrete with under floor heating) and briefly comprises **reception hall** with coats cupboard and **cloakroom**. There are three formal reception rooms, ie **drawing room** with bi fold doors, **dining room** and **sitting room/study**. Of particular note is the wonderful open plan **kitchen/dining/family room** which is equipped with an array of high quality appliances including two Miele ovens with warming drawers, microwave combination oven, steam oven, twin fridge/freezer and Miele induction hob and dishwasher, Quooker hot water tap. Bi fold doors overlooking the secluded south west aspect rear garden. **Utility room** has Miele washing machine and tumble dryer. Plant room.

The first floor features a **large master bedroom suite**, with a pleasant aspect over the rear garden, comprising bedroom, large **en suite dressing room** and a luxuriously fitted **en suite bathroom**. There are **two further bedroom suites** on the first floor again with luxury en suites. Second floor with **two further large bedrooms** again with luxury **en suite shower rooms**.

### **OUTSIDE**

The property features a large level south west aspect rear garden and a **double garage**. Front garden with carriage driveway.

### **DIRECTIONS**

From the offices of The Frost Partnership in Beaconsfield proceed over the railway bridge and over the roundabout by Waitrose. Continue for a short distance and take the first turning left in to Seeleys Road. Continue along Seeleys Road and after a short distance turn left in to Woodlands Drive and then first right in to Woodlands Glade where the new house will be found immediately on the left hand side.







**Special Note: For clarification, we wish to inform prospective purchasers that we have prepared these sale particulars as a general guide. We have not carried out a detailed survey, nor tested the service appliances and specific fittings. Room sizes should not be relied upon for carpets and furnishings.**

Whilst these particulars are believed to be correct they are not guaranteed by the vendor or the vendor's agent 'The Frost Partnership' and neither does any person have authority to make or give any representation or warranty on their behalf. Prospective purchasers must satisfy themselves by inspection or otherwise as to the correctness of each statement contained in these particulars. All measurements are approximate and the particulars do not constitute, or form part of, an offer or a contract.