



16 Chilworth Street, London, W2 6LL

Share of Freehold

This CHAIN FREE property would be perfect for an investor or first time buyer! The property is a RECENTLY REFURBISHED studio apartment with its own entrance. Benefits include having a large reception/studio space, a fully fitted kitchen with a separate utility area, wet room and plenty of storage space. Just 0.1 miles away from Paddington Station and in a prime location of the city. The apartment comes with 966 years remaining on the lease as well as a share of freehold. The service charge varies between £1500 to £2000 per year.

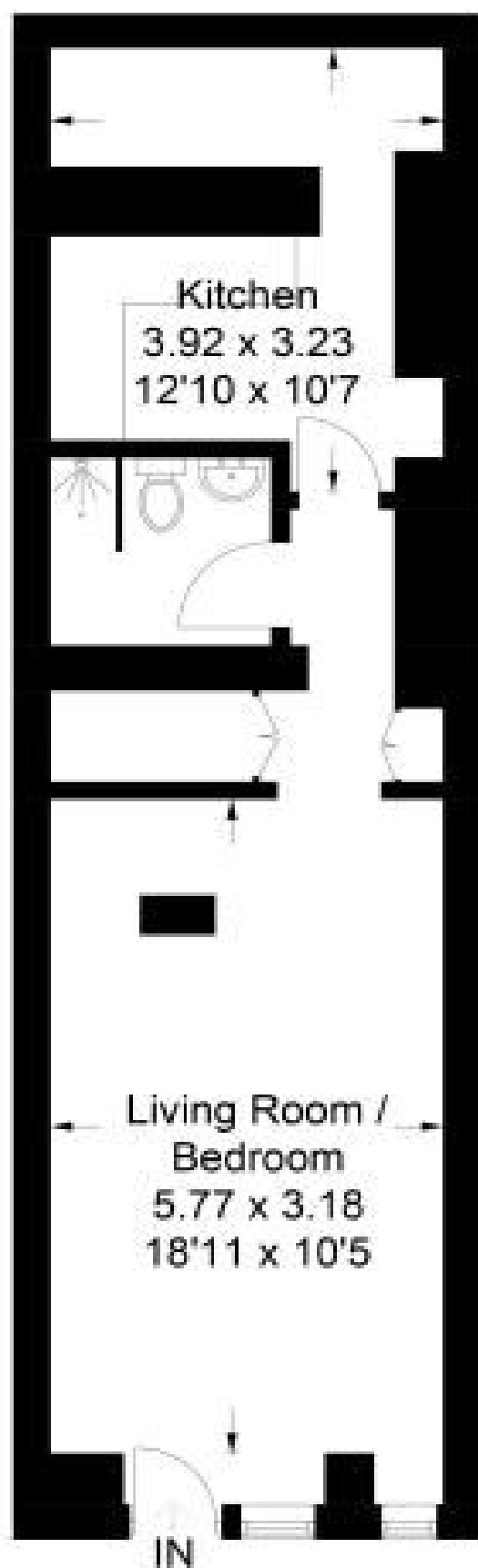
Airport House, Purley Way, Croydon, Surrey CR0 0XZ
T: 0208 681 7000 E: sales@paul-oshea.co.uk
www.paul-oshea.co.uk

 **pauloshea**
bespoke estate agency



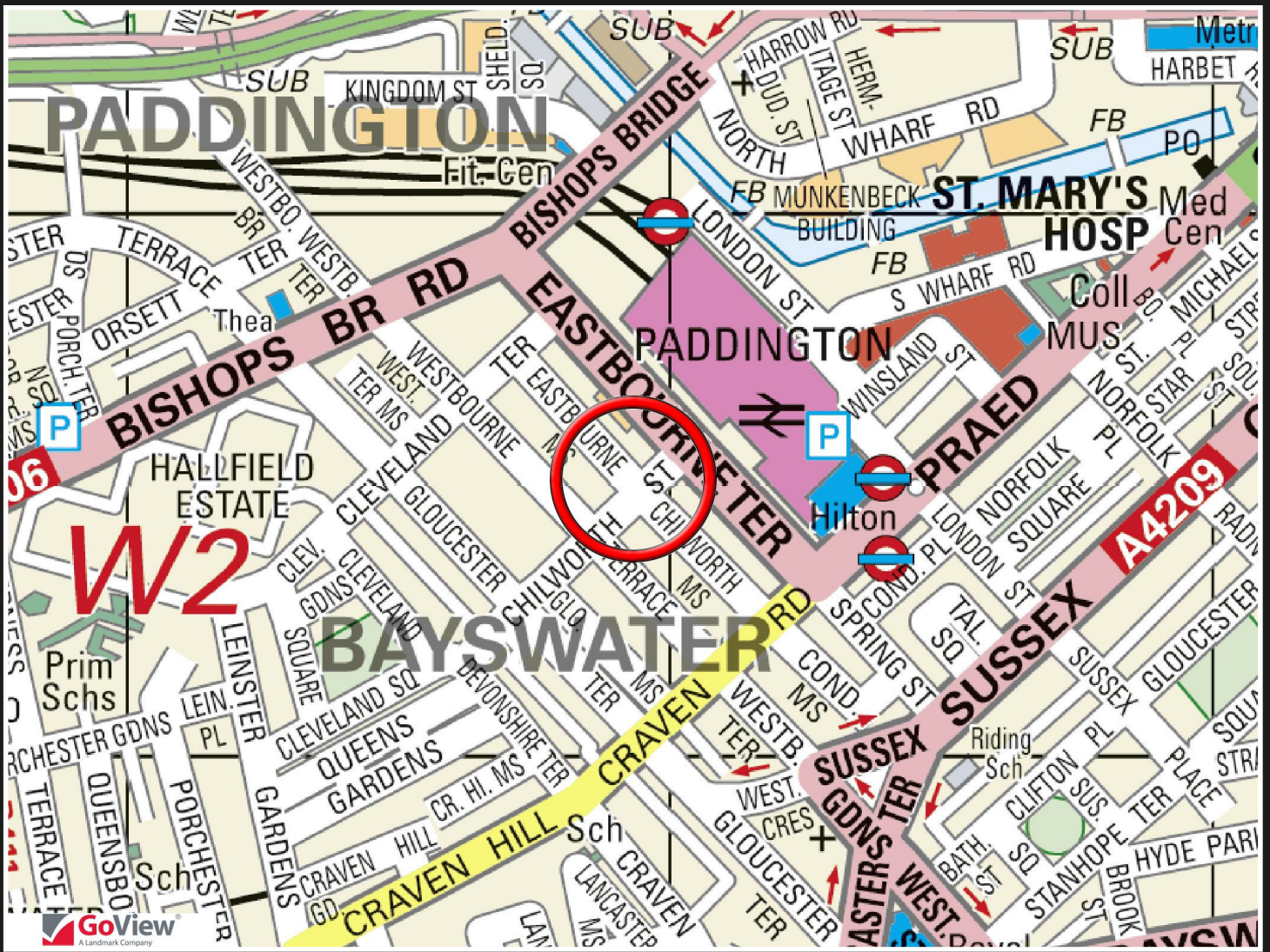
Chilworth Street, W2

Approximate Gross Internal Area = 41.1 sq m / 442 sq ft



Lower Ground Floor

This plan is for layout guidance only. Not drawn to scale unless stated. Windows and door openings are approximate. Whilst every care is taken in the preparation of this plan, please check all dimensions, shapes and compass bearings before making any decisions reliant upon them. (ID304074)



Energy Efficiency Rating		Current	Potential
Very energy efficient - lower running costs			
(92-100)	A		
(81-91)	B		
(69-80)	C		
(55-68)	D		68
(39-54)	E	47	
(21-38)	F		
(1-20)	G		
Not energy efficient - higher running costs			
England, Scotland & Wales		EU Directive 2002/91/EC	

Environmental Impact (CO ₂) Rating		Current	Potential
Very environmentally friendly - lower CO ₂ emissions			
(92-100)	A		
(81-91)	B		
(69-80)	C		
(55-68)	D		59
(39-54)	E	53	
(21-38)	F		
(1-20)	G		
Not environmentally friendly - higher CO ₂ emissions			
England, Scotland & Wales		EU Directive 2002/91/EC	

IMPORTANT: we would like to inform prospective purchasers that these sales particulars have been prepared as a general guide only. A detailed survey has not been carried out, nor the services, appliances and fittings tested. Room sizes should not be relied upon for furnishing purposes and are approximate. If floor plans are included, they are for guidance only and illustration purposes only and may not be to scale. If there are any important matters likely to affect your decision to buy, please contact us before viewing the property.

