



# Kingswood Firs

Grayshott, Hindhead GU26 6EX



Taylor Hill & Bond  
*Estate Agents and Surveyors*



# Kingswood Firs

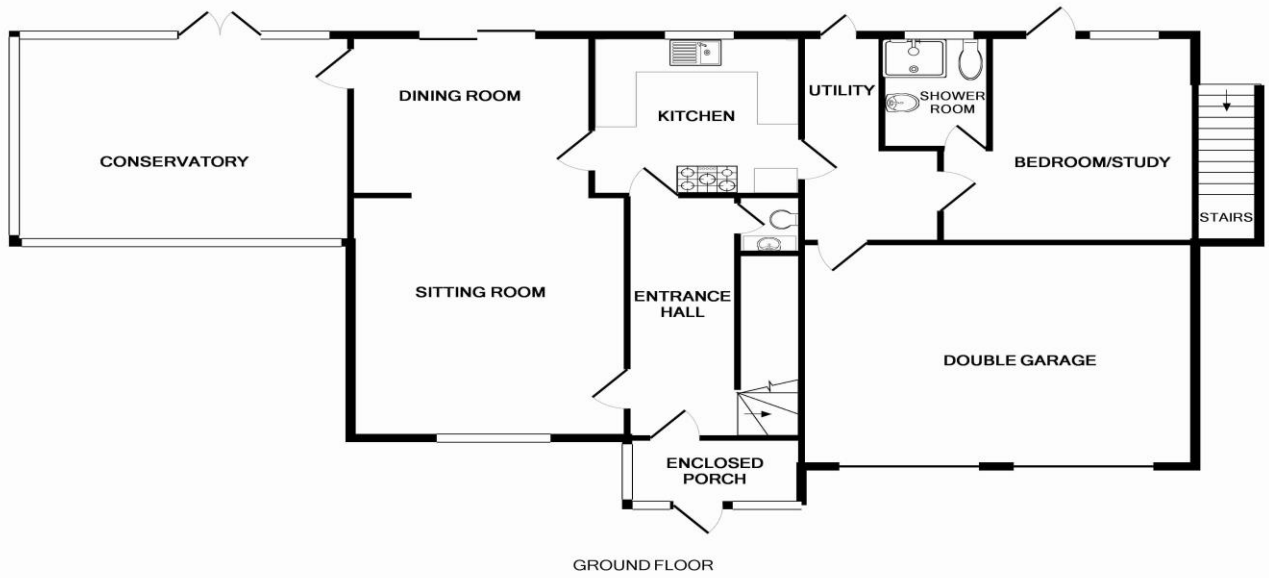
Grayshott, Hindhead, GU26 6EX

Guide Price - £900,000 to £925,000

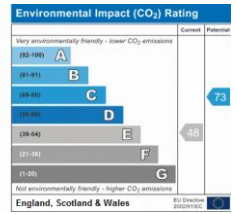
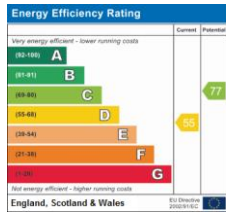
Taylor Hill & Bond are delighted to bring to the market this large detached family home in one of Grayshott's finest locations.

*The house offers substantial and flexible accommodation with a combination of six bedrooms and three reception rooms, kitchen utility and a large part brick conservatory. The accommodation is extremely flexible by virtue of a fully self-contained master suite that has previously been used as a one bedroom apartment with its own private access and also the ability to have a downstairs bedroom with wet room facility. Although in need of some modernization it is clear to see the true potential of such a wonderful property.*

*Standing towards the front of its grounds which we believe is approximately 1/3 of an acre, the house has the benefits of a drive for several vehicles, double integral garage with up and over doors, large front with secluded rear gardens having an attractive wooded area leading onto further woodland. Internal viewing is highly recommended as properties such as this rarely come to the market.*



Whilst every attempt has been made to ensure the accuracy of the floor plan contained here, measurements of doors, windows, rooms and any other items are approximate and no responsibility is taken for any error, omission, or mis-statement. This plan is for illustrative purposes only and should be used as such by any prospective purchaser. The services, systems and appliances shown have not been tested and no guarantee as to their operability or efficiency can be given  
 Made with Metropix ©2014



IMPORTANT: we would like to inform prospective purchasers that these sales particulars have been prepared as a general guide only. A detailed survey has not been carried out, nor the services, appliances and fittings tested. Room sizes should not be relied upon for furnishing purposes and are approximate. If floor plans are included, they are for guidance only and illustration purposes only and may not be to scale. If there are any important matters likely to affect your decision to buy, please contact us before viewing the property.



Taylor Hill and Bond, 1 College Hill, Haslemere, Surrey, GU27 2JH  
Tel: 01428 776000 [www.taylorhillandbond.co.uk](http://www.taylorhillandbond.co.uk)



Taylor Hill & Bond  
*Estate Agents and Surveyors*