

SNELLERS

ESTATE AGENTS



South Western Road, TW1

£1,275,000

A truly exquisite, semi detached Victorian family home set on this highly desirable road in the heart of St Margarets. Energy Rating D.



Presented to the highest standard throughout and retaining its character features, the accommodation offers a welcoming entrance hallway, large bay fronted reception room with original oak flooring and a feature fireplace, a high quality contemporary kitchen with top of the range integrated appliances and a dining area, perfect for entertaining, with doors leading to a landscaped garden. Attached to the kitchen is a thoughtfully designed utility area and a bathroom.

On the first floor there are two generous double bedrooms, a further good-sized bedroom and a stylish modern wet room and WC. The loft has been cleverly designed to incorporate a generous master bedroom with plenty of eaves storage space, Juliet balcony and a contemporary four piece family bathroom.

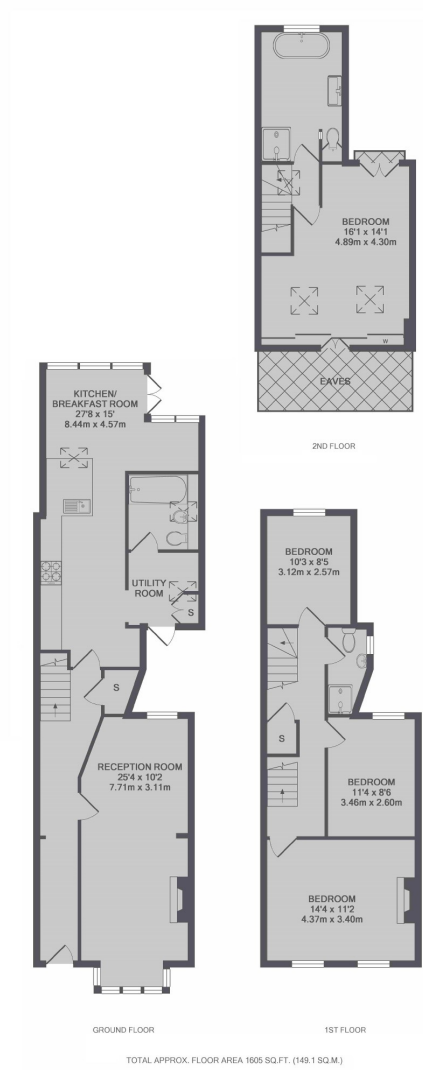
South Western road is a highly sought after tree-lined cul-de-sac in the heart of St Margarets, short walk away from Moor Mead Park, amenities, train station and excellent schools. Richmond town centre is under half a mile away with its vast array of shops, bars and restaurants.

- Semi Detached • Victorian • Excellent Condition •
- Four Bedrooms • Three Bathrooms • Great School Catchments •



SNELLERS

ESTATE AGENTS



Snellers St. Margarets Sales
36 Crown Road
St Margarets
TW1 3EH
020 8892 8008
stmargaretssales@snellers.co.uk

Energy Rating: D We aim to make our particulars both accurate and reliable. However they are not guaranteed; nor do they form part of an offer or contract. If you require clarification on any points then please contact us, especially if you're traveling some distance to view. Please note that appliances and heating systems have not been tested and therefore no warranties can be given as to their good working order