



Impressive family house, beautiful grounds

exclusive to

SAUNDERS

richardsaunders.co.uk

Oakwood House

Warren Drive

Kingswood

KT20 6PY

Kingswood Village ½ mile
London by rail 40 minutes
M25 (Junction 8) 3 miles

All times and distances are approximate

Set in one of Kingswood's finest locations, an attractive 1920's house with excellent accommodation and set in beautiful gardens of around 1.2 acres.

Reception Hall | Cloakroom
Sitting Room | Dining Room
Family Room | Orangery
Kitchen Breakfast Room
Study | Utility Room

6/7 Bedrooms

3 Bath/Shower Rooms including 2 En-suites

Loft Storage Area

Double Garage

Driveway Parking

Front and Rear Gardens

In all, some 1.2 acres

Price £2.495 million





Oakwood House is a substantial six/seven bedroom residence set in one of the larger plots within Kingswood Warren Estate. The accommodation is well appointed, with particularly spacious ground floor accommodation. The kitchen/breakfast room and large orangery area make an excellent family living space and makes the most of the view across the superb rear garden. There are currently six well-proportioned bedrooms, including two suites with dressing area/room and en suite bathrooms.

The gardens are beautiful, and the house sits well in this secluded plot of nearly 1.2 acres. The front garden is deep with extensive driveway parking and a detached double garage with secure courtyard area behind. The rear garden extends to well over 200', with areas of lawn, mature shrubs and trees, and a gated swimming pool area with summerhouse.

Warren Drive is one of the most favoured roads within Kingswood Warren, and the house is situated within walking distance of the Village centre, with its local shops, pub and restaurants. Further amenities can be found at nearby Banstead Village, Epsom or Reigate. The local station has reliable services to London whilst the A217 offers a fast link to the M25 at Junction 8 (Reigate Hill).

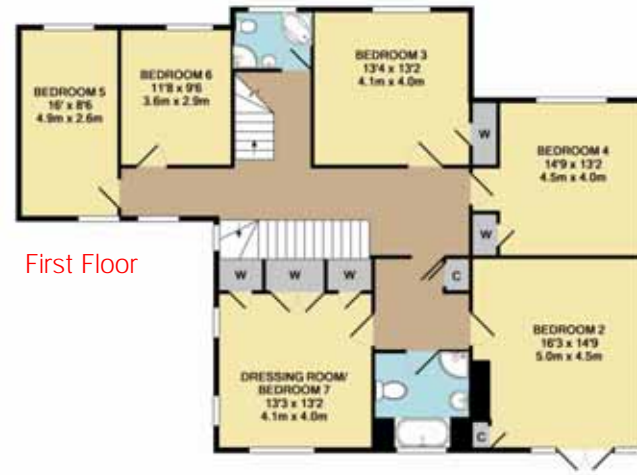


Covered Porch with Feature Arch | 29' Double Aspect Sitting Room with Feature Fireplace and Herringbone Flooring | Kitchen/Breakfast Room with Aga Range Cooker, open to a Large Orangery overlooking the Gardens | 25' Billiard Room (currently formal Dining Room) with doors to rear terrace | Top floor Principal Suite with en suite Bathroom | First Floor Suite, with en suite Bathroom and large separate Dressing Room (possible Bedroom 7) | Secluded Rear Garden, well over 200' in length and with a large terrace the full width of the house | Swimming Pool Area with Summerhouse and Pool House | Detached Double Garage with useful courtyard area behind | Gated Frontage with extensive Driveway Parking





Ground Floor



First Floor



Second Floor



[see more at richardsaunders.co.uk](http://richardsaunders.co.uk)

IMPORTANT NOTICE TO PURCHASERS: We endeavour to make our sales particulars accurate and reliable, however, they do not constitute or form part of an offer or any contract and none is to be relied upon as statements of representation or fact. The services, systems and appliances listed in this specification have not been tested by us and no guarantees as to their operating ability or efficiency are given. All measurements have been taken as guide to prospective buyers only, and are not precise. If you require clarification or further information on any points, please contact us, especially if you are travelling some distance to view.

Viewing
Please call us to arrange
a viewing appointment

1 Waterhouse Lane
Kingswood
01737 360000

2 High Street
Banstead
01737 363333

Residential Lettings
All Areas
01737 370700

SAUNDERS

richardsaunders.co.uk