



Brixton: 020 7095 5777

brixton@keatingestates.com



Elm Park  
Brixton, SW2

£999,950 Freehold

End of Terrace House  
4 Bedrooms  
2 Bathrooms  
Bright And Airy  
Throughout  
Close to Brockwell Park  
Recently Redecorated  
Period Freehold House

## Elm Park

A beautiful example of a period end of terrace house, this four bedroom property on Elm Park will appeal to a wide range of purchasers.

A period end of terrace four bedroom house with two bathrooms. Elm Park is situated a fifteen minute walk to Brixton and a five minute stroll to Brockwell Park. The ground floor comprises a separate reception, a WC, a laundry room and the piste de resistance; a fantastic kitchen diner with concertina doors that lead onto a private garden. Stairs lead to three bedrooms, two of which are a similar size and the third is perfect as a guest room/child's bedroom or home office. The master bedroom is a substantial size with a Juliet balcony. The two bathrooms are contemporary with an inviting feel.

**Council Tax Band E**

**EPC rating D (64)**



Photographs







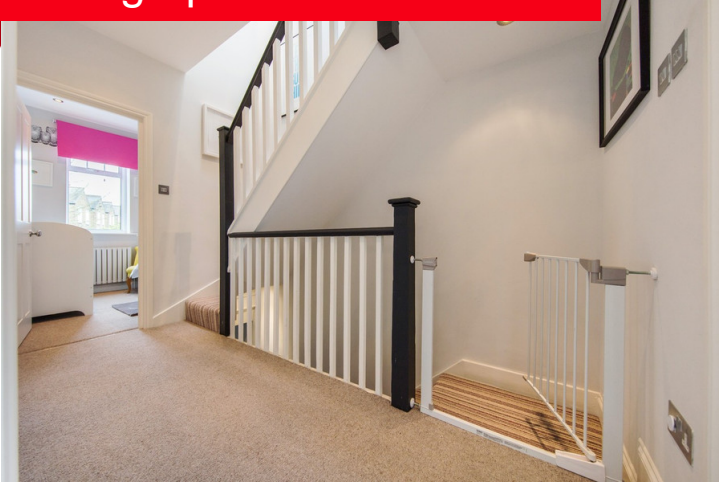
Photographs







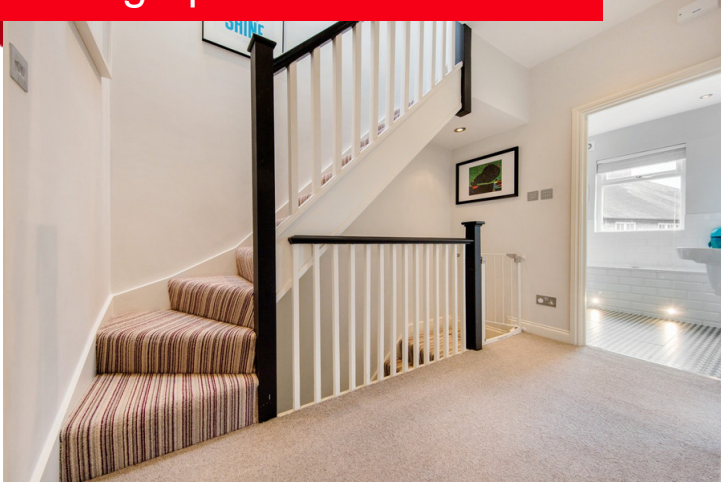
Photographs







Photographs







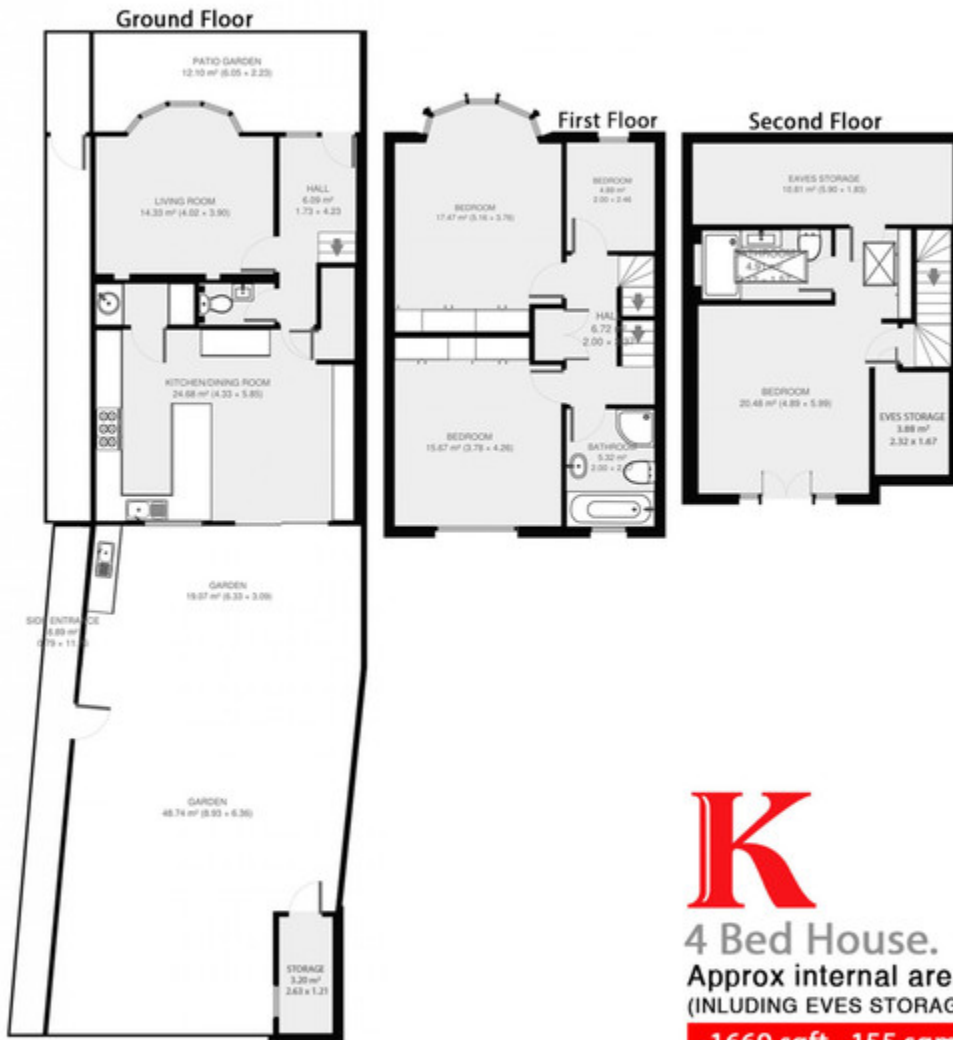
Photographs





Floorplan

Elm Park



**4 Bed House.**  
Approx internal area:  
(INCLUDING EVES STORAGE)

**1669 sqft 155 sqm**

( Excl. Eves Storage 140m<sup>2</sup> 1507ft<sup>2</sup> )  
While we do try our very best,  
floor plans are produced as a  
guide only and we take no  
responsibility for the precise  
accuracy with which any  
property is represented





## Transport Information

**FRONT DOOR TO WORK**  
 We calculate times using the first fast train after 8am to be most relevant to your journey to work. All journey times are from a property to the area listed right.

- Victoria **24 mins**
- The City **29 mins**
- South Bank **30 mins**
- London Bridge **31 mins**
- Canary Wharf **44 mins**

**FRONT DOOR TO NEAREST STATIONS**

- HERNE HILL  
13 MINS
- TULSE HILL  
13 MINS
- BRIXTON  
17 MINS



## Location



## Brixton

Loved by those in the know, Brixton has a massively dedicated fan-base in people in search of culture, cuisine and nightlife. The redevelopment of Brixton's covered market has created a mecca to global cuisine; as well as the iconic cinema and arts venue, Windrush square with its new museum and Tate library, the many great pubs, restaurants, music venues and night clubs make it clear why this is one of the fastest growing areas of London in the popularity stakes. Great transport links (with further proposed improvements) and Brockwell park, regarded by many as the capital's best open space complete the set of lifestyle bonuses in this very fresh and vibrant corner of London.

