



www.kings-group.net

326 Mare Street
London E8 1HA
Tel: 0208 510 0808

Lee Street, London, E8 4FB
£1,050,000

KINGS GROUP are pleased to present City Mill, an immaculately presented 9th Floor 3 Bedroom Penthouse apartment. The property comprises of Lounge with Private Roof Terrace, Three Double Bedrooms, Two of which with an en-Suite, a Private Balcony to Master Bedroom, a fully fitted kitchen with Integrated Appliances, a family bathroom and ample Built in Storage.

The property also boasts Double Glazed Windows throughout and Gas Central Heating.

EPC Rating: B

Total Floor Area: 102 Meters Squared

City Mills apartments are based in the heart of Hackney, The property is moments from Haggerston Road which offers local amenities as well as charming independent shops offering a multitude of services and friendly bars & restaurants. Transport Links can also be found within easy reach at Haggerston, and Dalston Junction Overground Stations and multiple bus routes available.

Entrance Hall

Front door into hall, stripped wood flooring, storage cupboard, cupboard housing boiler and power point.

Bathroom

5'6" x 7'4" (1.68m x 2.24m)

Spotlights to ceiling, part tiled walls, panel enclosed bath with shower attachment within, heated towel rail, extractor fan and tiled flooring.

Living Room

17'5" x 17'7" (5.31m x 5.38m)

Double glazed window and access to the roof terrace, double radiator, telephone point, television point, power point and stripped wood flooring.

Kitchen

6'3" x 9'8" (1.93m x 2.95m)

Range of wall and base units with roll top work surfaces incorporated, integrated electric hob and oven, double sink and drainer unit, integrated fridge freezer, power point and tiled flooring.

Bedroom One

11'2" x 13'6" (3.40m x 4.11m)

Double glazed window and access to roof terrace, single radiator, built in storage cupboard, television point, power point and carpet.

En Suite

4'3" x 4'4" (1.30m x 1.32m)

Spot lights to ceiling, shower cubicle with wall mounted thermostatic shower within, wash hand basin with mixer tap, low level flush w.c, part tiled walls and tiled flooring.

Bedroom Two

9'1" x 16'4" (2.79m x 5.00m)

Double glazed window to front aspect, single radiator, built in storage cupboard, television point, power point and carpet.

En Suite

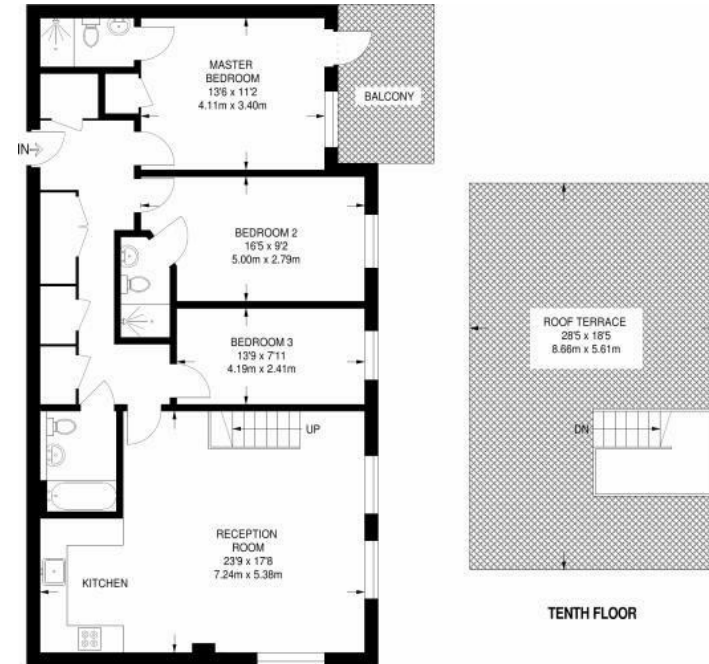
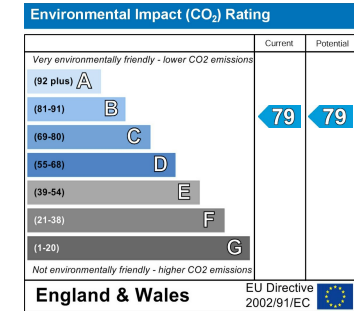
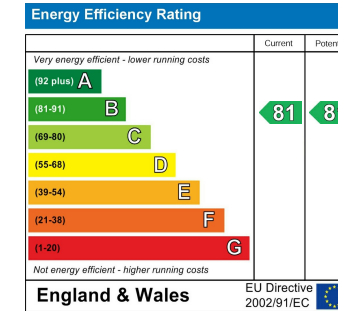
4'5" x 4'7" (1.35m x 1.40m)

Spot lights to ceiling, shower cubicle with wall mounted thermostatic shower within, wash hand basin with mixer tap, low level flush w.c, part tiled walls and tiled flooring.

Bedroom Three

7'10" x 13'8" (2.41m x 4.19m)

Double glazed window to front aspect, single radiator, power point and fitted carpet.



NINTH FLOOR
1077 SQ FT / 100.1 SQ M

