



19 Blanche Street, Dowlais, Merthyr Tydfil, Mid Glamorgan, CF48 3PE

£91,000

- TERRACED HOUSE
- 1 BATHROOM
- OFF ROAD PARKING
- 3 BEDROOMS
- PRIVATE GARDEN

Better move are proud to present this three-bedroom mid terraced house situated in Merthyr Tydfil

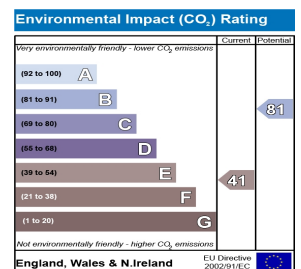
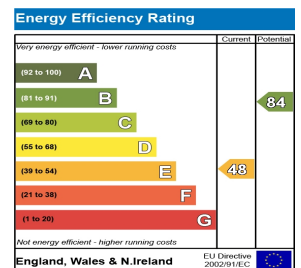
The Property offers a perfect first family home with a rear garden. The property is close to a range of local amenities including shops and restaurants/bars. The property is just on the outskirts of the Brecon Beacons National Park offering wild moorland scenery and beautiful walks. Local schools include Dowlais Infant School, Saint Illtyd's Roman Catholic Primary School and Gellifaelog Primary School. Transport links can be found via Merthyr Tydfil train station and the A465 road.

The ground-floor accommodation comprises of two large open plan reception rooms, fitted kitchen and a family bathroom.

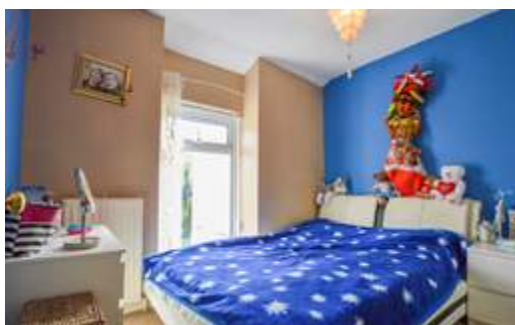
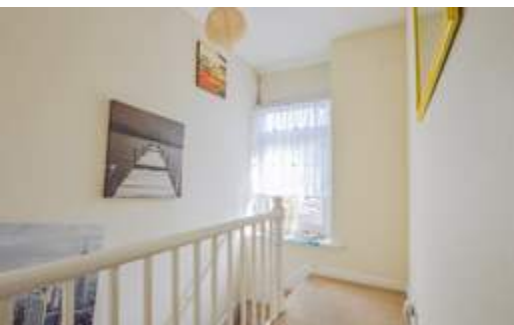
The first-floor accommodation comprises of three bedrooms.

The rear garden consists of mainly patio area with steps leading to raised patio terrace.

The property also benefits from space for parking, fully double-glazed windows and gas central heating. Viewing is highly recommended.



For further information or to
arrange a viewing please call
0330 004 0050



Ground Floor

Hall (0.8 x 6.5m)

Half-glazed front door, laminate flooring, stairs to first floor, door to dining room and living room.

Living Room (3.8 x 3.1m)

Double glazed window to front, feature fireplace, laminate flooring, open plan to dining room.

Dining Room (3.8 x 3.3m)

Double glazed French doors to rear, laminate flooring, under stairs cupboard, door to kitchen, open plan to lounge.

Kitchen (3.0 x 2.8m)

Double glazed window to side, tiled flooring, fitted with a matching range of base and eye level units with worktop surface over, fitted electric oven and gas hob, stainless steel sink with drainer and mixer tap, space for fridge/freezer, double glazed door to rear garden, door to bathroom.

Bathroom (2.9 x 2.0m)

Tiled flooring, double glazed window to rear, window to side, fitted with a three-piece suite comprising of a bath with shower over, low level WC and wash hand basin.

First Floor

Landing (3.1 x 3.0m)

Double glazed window to rear, fitted carpet, doors to bedrooms.

Bedroom 1 (3.0 x 2.0m)

Double glazed window to rear, fitted carpet, storage cupboard.

Bedroom 2 (2.5 x 3.4m)

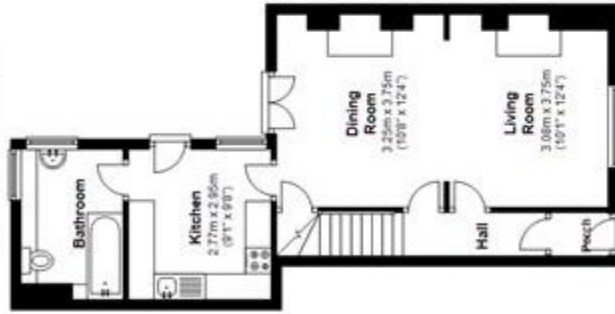
Double glazed window to front, fitted carpet.

Bedroom 3 (2.1 x 3.4m)

Double glazed window to front, fitted carpet.

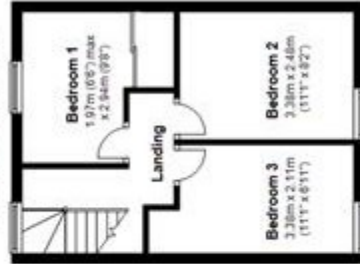
Ground Floor

Approx. 44.7 sq. metres (481.1 sq. feet)



First Floor

Approx. 30.2 sq. metres (324.7 sq. feet)



Total area: approx. 74.9 sq. metres (805.8 sq. feet)

This floor plan is for illustrative purposes only and is not to scale. Where measurements are shown, these are approximate and should not be relied upon. Total square area includes the entirety of the property and any outbuildings/garages. Sanitary ware and Kitchen fittings are representative only and approximate to actual position, shape and style. No liability is accepted in respect of any consequential loss arising from the use of this plan. Reproduced under licence from Evolve Partnership Limited. All rights reserved.

Plan produced using PlanUp