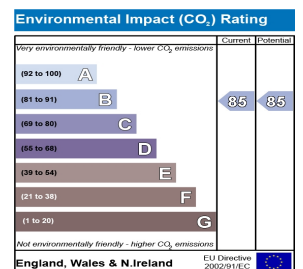
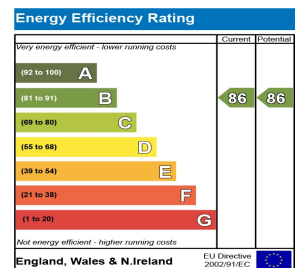




**5 Gunnersbury Mews, London, W4 4BF** **£2,200,000**

- TERRACED HOUSE
- 3 BATHROOMS
- SOUGHT AFTER LOCATION
- 4 BEDROOMS
- MODERNISED LUXURY INTERIOR
- CLOSE TO TRANSPORT LINKS



Bettermove are proud to present this beautiful 3 bedroom terraced house located in Chiswick, London.

This property benefits from double glazing, gas central heating throughout and off street parking.

It briefly comprises of a luxury lounge, dining room, kitchen, 4 bedrooms and 3 bathrooms.

The exterior of the property has a private rear garden.

The secure gated development opens onto a private courtyard featuring an eye catching tranquil water display, whilst also holding the entrance to the underground car park and integral garages.

You can find Belmont Primary School close by which is top of the list within the local catchment, but St Mary's, Orchard House and Ravenscourt Park are all high-performing primaries. For commuters Gunnersbury Station sits adjacent to The Crescent, Chiswick W4 and provides both overground and underground options.

For further information or to arrange a viewing please call 0330 004 0050



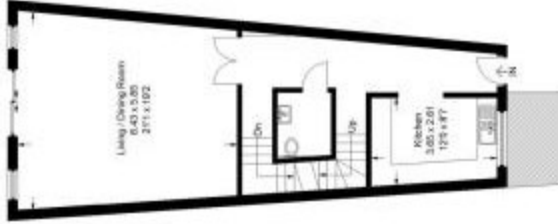


Second Floor

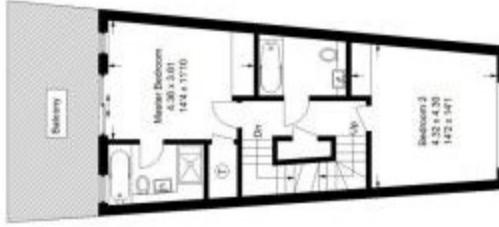


Lower Ground Floor

Approximate  
Gross Internal Area  
208.4 sqm / 22571 sq ft  
(including Garage)



Ground Floor



First Floor

Intended for identification purposes only, measurements are approximate, not to scale.  
Floorplan@arch.com 8.2015 (D-000051)