



Highfield Hill, SE19

£1,400,000

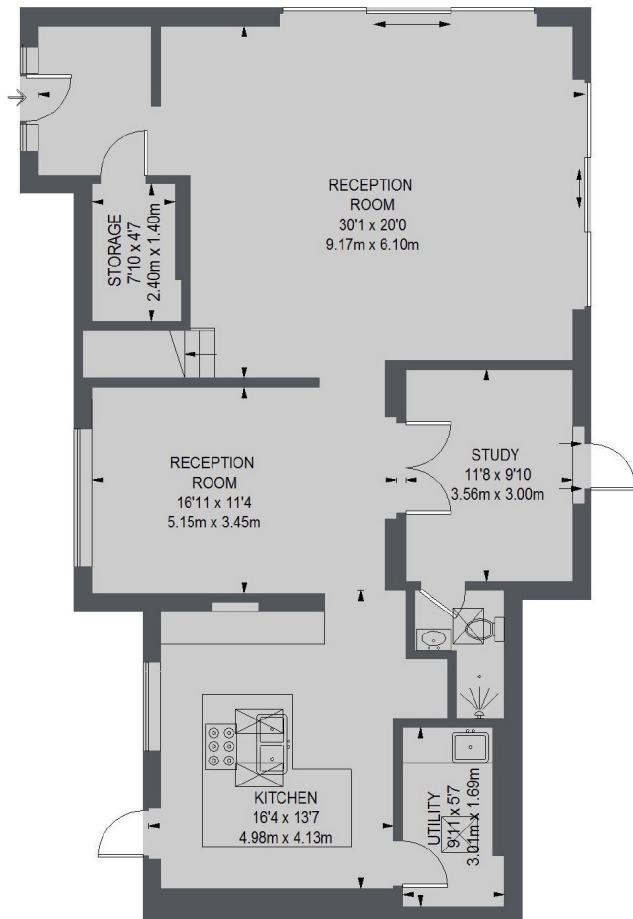
This exceptional property has been fully extended and renovated. Its blend of high-end contemporary design plus a well-considered layout has produced an outstanding modern family home.

Positioned close to Westow Park in the heart of The Crystal Palace Triangle with numerous restaurants and fashionable shops nearby. Direct mainline rail links to the City are available from Crystal Palace.

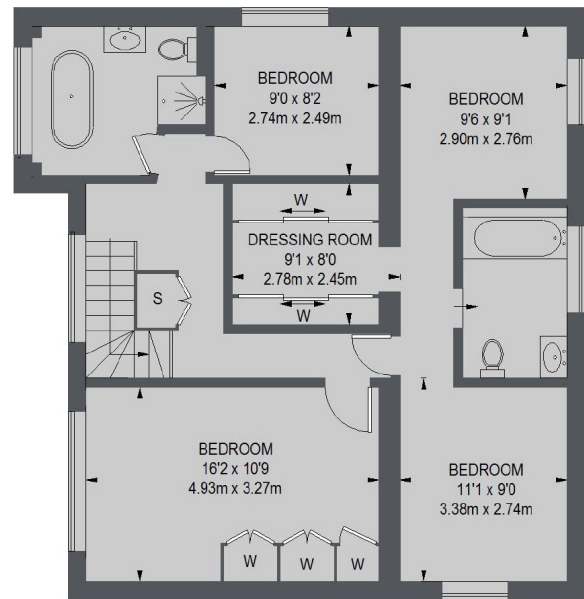
Features

- Refurbished & Extended
- Secure Location
- Open Plan Design
- Flexible layout
- 0.25 Acre Of Gardens
- Parking For 4/5 Cars

Highfield Hill, London, SE19



GROUND FLOOR



FIRST FLOOR

TOTAL APPROX. FLOOR AREA = 2012 SQ. FT. (186.94 SQ. M.)

Contact

To arrange a viewing call our office on the number below or visit our website.



Energy Rating: D. We aim to make our particulars both accurate and reliable. However they are not guaranteed; nor do they form part of an offer or contract. If you require clarification on any points then please contact us, especially if you're traveling some distance to view. Please note that appliances and heating systems have not been tested and therefore no warranties can be given as to their good working order.