



Abbeville Road, SW4

£1,500,000

This stylish and much improved terraced Victorian family house measuring 2,251Sq Ft. With Five double bedrooms served by two bathrooms this fully extended home offers well proportioned

- Victorian Terraced
- Newly Refurbished
- Five Bedrooms
- Two Bathrooms
- South Facing Garden
- Heart of Abbeville Village

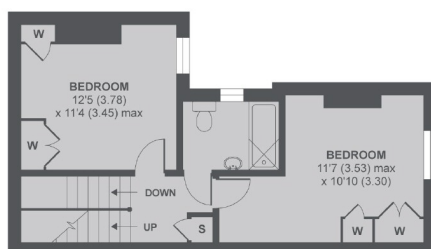


The front door leads into a completely open plan ground floor which is adorned with Black Russian Oak throughout. The double reception has feature fireplaces and a bay window with French shutters. This opens into the dining area and kitchen with a hand crafted kitchen featuring zinc worktops and a range of integrated appliances. Bi-folding doors the full width of the back wall open onto the south facing garden which flows seamlessly from the house. On the first floor is the master bedroom with wonderful fitted wardrobes, adjacent luxurious bathroom with roll top bath and walk in rain shower, and a further double bedroom with Juliet balcony. Over the second and third floors are three further double bedrooms served by a further family bathroom.

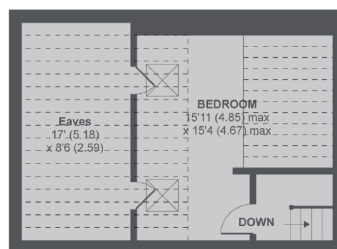
Abbeville Road is a much sought after residential road close to the independent shops, restaurants and cafés of Abbeville Village, with Clapham South & Clapham Common underground stations both within easy reach.



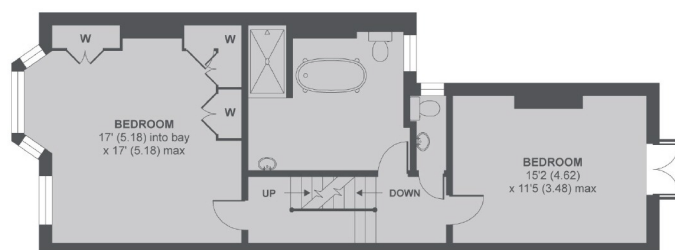




2nd Floor

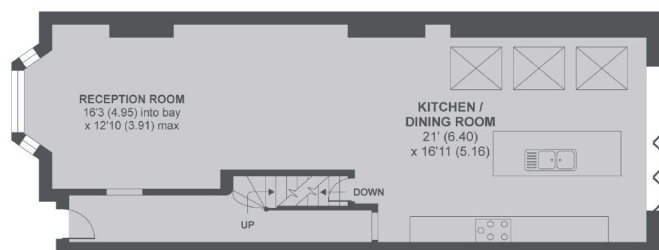


3rd Floor

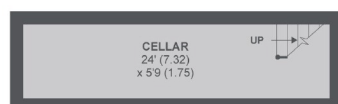


1st Floor

Denotes restricted head height



Ground Floor



Lower Ground Floor



Abbeville Road SW4

MAIN HOUSE APPROX FLOOR AREA 2251 SQ.FT 209.1 SQ.M (INCLUDES RESTRICTED HEAD HEIGHT & EXCLUDE EAVES)
STORE APPROX FLOOR AREA 13 SQ.FT 1.2 SQ.M

Copyright nichecom.co.uk 2018 REF : 257191

Jacksons Clapham
73 Abbeville Road
London
SW4 9JN
020 8875 7995
clapham.sales@jacksonsestateagents.com

Energy Rating: D We aim to make our particulars both accurate and reliable. However they are not guaranteed; nor do they form part of an offer or contract. If you require clarification on any points then please contact us, especially if you're traveling some distance to view. Please note that appliances and heating systems have not been tested and therefore no warranties can be given as to their good working order.