

# The Greens

Leicester Road, Hinckley, Leicestershire, LE10 3DR

*A selection of impressive homes overlooking Hinckley Golf Club*



[www.dwh.co.uk](http://www.dwh.co.uk)

*Where quality lives*



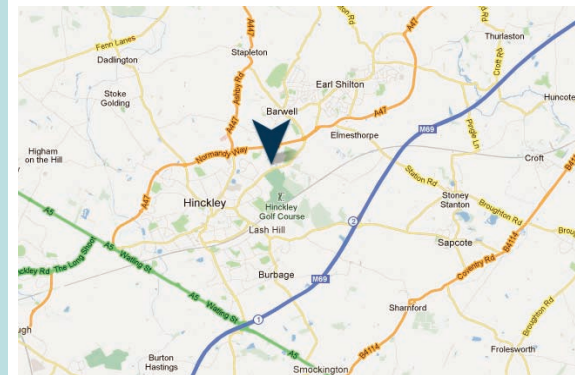
**David Wilson Homes**

# The Greens

## Introducing The Greens

The Greens is a new development located on the eastern edge of Hinckley. The homes here are perfectly suited to all home purchasers from first time buyers to growing families and down-sizers. Bordering Hinckley Golf Club, it's in a popular location close to open countryside and woodland, while also being in easy reach of the town centre and motorway which are both just a few minutes away.

Hinckley is an excellent choice for couples and families of all sizes. In the town centre there are a range of high street shops, bars and restaurants. For commuters, the M69 runs to the south of the town, providing direct links to Leicester, Coventry and Birmingham. If you're looking to relax, the town is surrounded by open countryside where you can enjoy a pint in one of the traditional pubs.



[www.dwh.co.uk](http://www.dwh.co.uk)

*Where quality lives*

**David Wilson Homes**



# The Greens

## Site Plan

- S The Stevenson (P231)  
2 Bedroom Home
- Ff The Fairfield (T234)  
2 Bedroom Home
- N The Nugent (T307)  
3 Bedroom Home
- K The Kennett (T310)  
3 Bedroom Home
- At The Atherton (P325)  
3 Bedroom Home
- F The Fairway (P332)  
3 Bedroom Home
- H The Hadley (P341)  
3 Bedroom Home
- I The Irving (H404)  
4 Bedroom Home
- Dr The Drummond (H408)  
4 Bedroom Home
- W The Winstone (H421)  
4 Bedroom Home
- C The Cornell (H433)  
4 Bedroom Home
- L The Layton (H436)  
4 Bedroom Home
- Mw The Millwood (T447)  
4 Bedroom Home
- Sb The Shelbourne (H454)  
4 Bedroom Home
- A The Ashtree (H455)  
4 Bedroom Home
- Ho The Holden (H469)  
4 Bedroom Home
- E The Emerson (H500)  
5 Bedroom Home
- Li The Lichfield (H533)  
5 Bedroom Home
- M The Moorecroft (H536)  
5 Bedroom Home
- Bu The Buckingham (H597)  
5 Bedroom Home
- AH Affordable Housing
- SH Showhomes
- SC Sales Centre



The company reserves the right to make amendments to the development layout and materials at any time. This leaflet is for guidance only and is not intended to form any part of any contract. For landscaping information please refer to detailed drawings.10/13



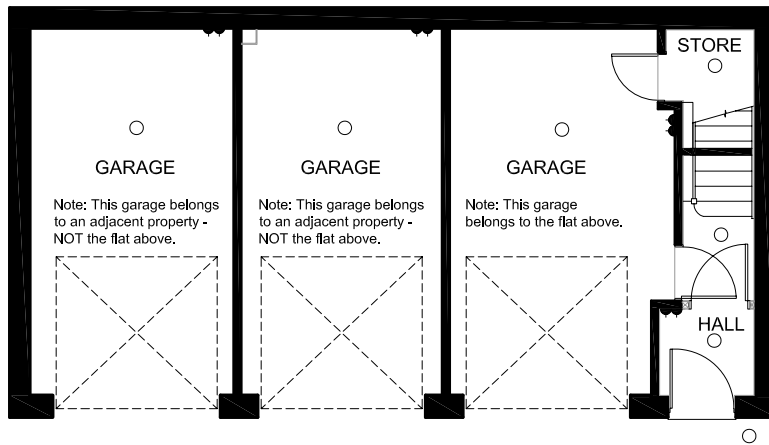
# The Stevenson

Two bedroom apartment

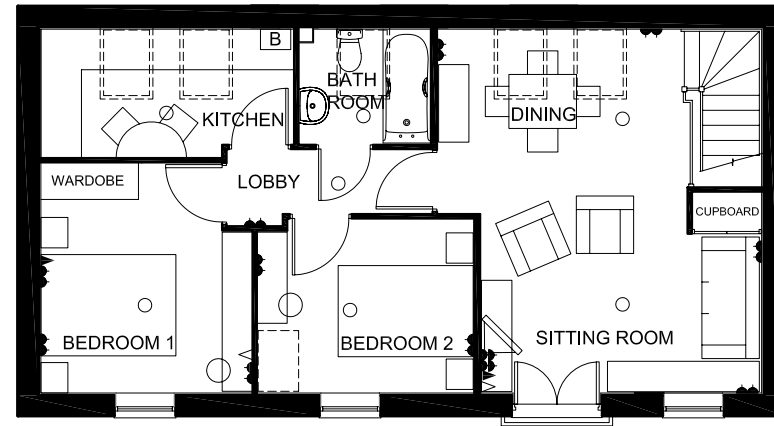
## Ground Floor

## First Floor

Sitting/Dining	5389 max x 4157mm max	17'8" x 13'8"
Kitchen	3740 x 1897mm max	12'3" x 6'3"
Bedroom 1	2886 max x 3123mm max	9'5" x 10'3"
Bedroom 2	2573 x 3197mm max	8'5" x 10'6"
Bathroom	1940 x 1700mm	6'4" x 5'7"



Ground Floor



First Floor

### Key

Single switched socket outlet ▲ Double switched socket outlet ▲▲ Ceiling Lighting ○ Telephone outlet ▲▲ TV aerial outlet ▲▲ Radiator —

The company reserves the right to change floor layouts at any time. The computer generated image and floor plans are indicative only, to give a general indication of the proposed development and floor layout. The dimensions are accurate to within + or - 50mm. The exterior finishes may vary.



# The Fairfield

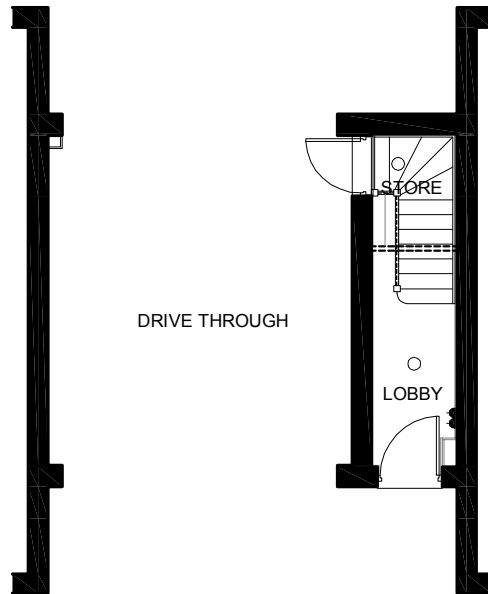
Two bedroom home

## Ground Floor

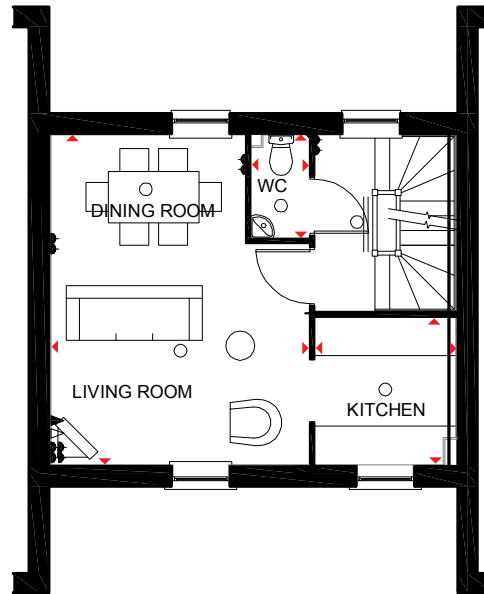
## First Floor

## Second Floor

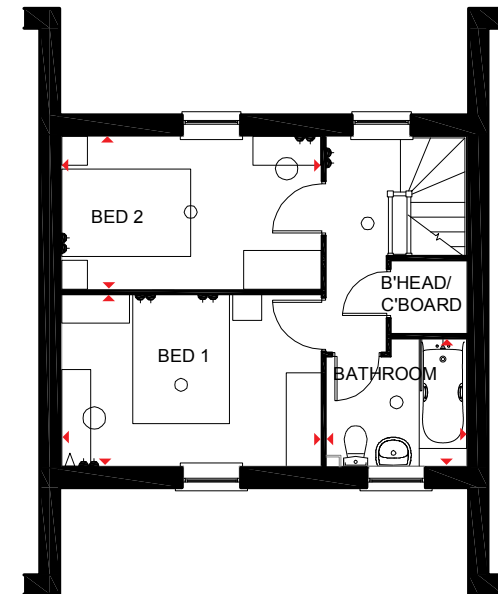
Living/Dining	4001 x 5117mm	13'2" x 16'9"	Bedroom 1	4016 x 2653mm	13'2" x 8'8"
Kitchen	2180 x 2283mm	7'2" x 7'6"	Bedroom 2	4016 x 2375mm	13'2" x 7'10"
WC	900 x 1601mm	2'11" x 5'3"	Bathroom	2165 x 1973mm	7'1" x 6'6"



Ground Floor



First Floor



Second Floor

### Key

Single switched socket outlet ▲ Double switched socket outlet ▲▲ Ceiling Lighting ○ Telephone outlet ▲ TV aerial outlet △ Radiator —

The company reserves the right to change floor layouts at any time. The computer generated image and floor plans are indicative only, to give a general indication of the proposed development and floor layout. The dimensions are accurate to within + or - 50mm. The exterior finishes may vary.



# The Nugent

Three bedroom terraced home

## Ground Floor

Lounge/Dining	4733 x 4497 mm	15'6" x 14'9"
Kitchen	3304 x 2570 mm	10'10" x 8'5"
WC	1795 x 836 mm	5'11" x 2'9"

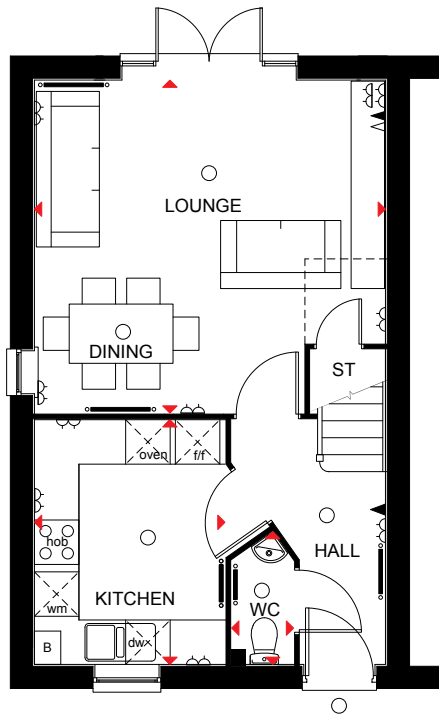
## First Floor

Bed 2	2769 x 4110 mm	9'1" x 13'6"
Bed 3	2659 x 3691 mm	8'9" x 12'1"
Bath	1875 x 2598 mm	6'2" x 8'6"

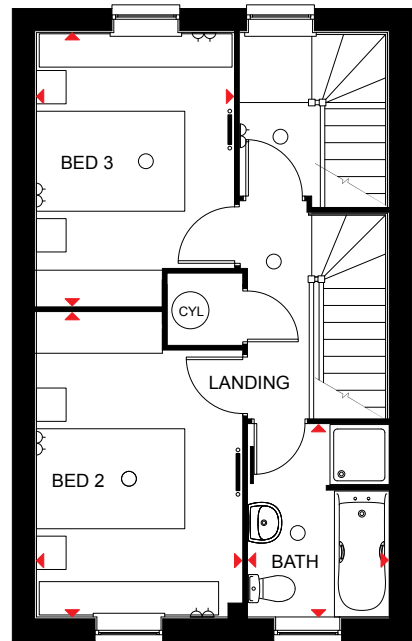
## Second Floor

Bed 1	5830 x 3434* mm	19'2"* x 11'13"
En-suite	1200 x 2496* mm	4'0" x 8'2"*

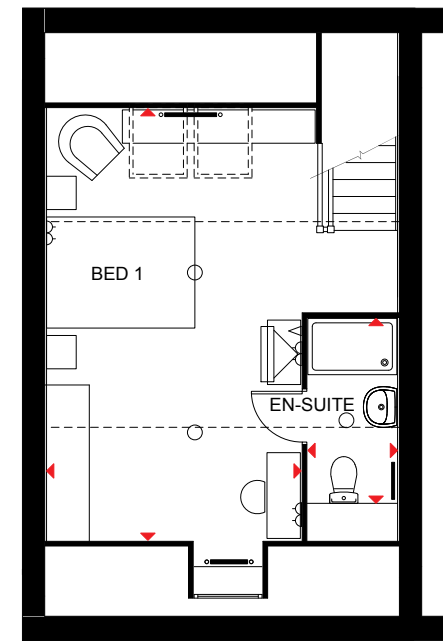
\*Overall floor dimension includes lowered ceiling areas



Ground Floor



First Floor



Second Floor

- KEY**
- Light fitting
  - ◀ Telephone outlet point
  - Radiator
  - B Boiler
  - CYL Cylinder
  - wm Washing machine space
  - ◁ Electric socket
  - ◁ T.V. aerial socket
  - Towel radiator
  - ST Store
  - f/f Fridge/freezer space
  - dw Dishwasher space
  - td Tumble dryer space
  - ◀▶ Dimension location

The company reserves the right to change floor layouts at any time. The computer generated image and floor plans are indicative only, to give a general indication of the proposed development and floor layout. The dimensions are accurate to within + or - 50mm. The exterior finishes may vary.



# The Hadley

Three bedroom detached home

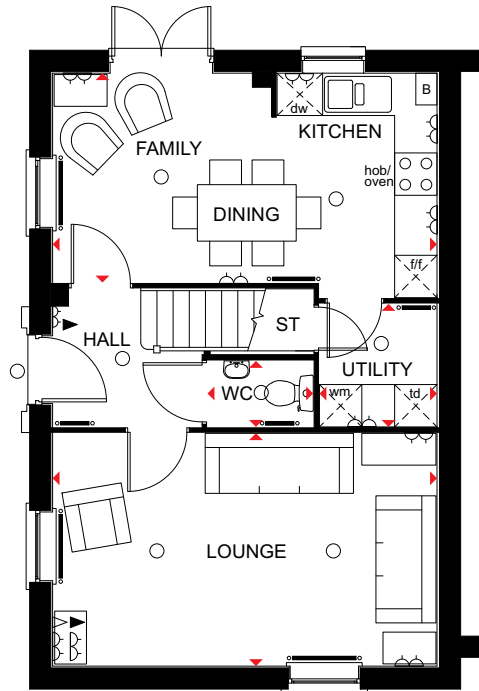
## Ground Floor

Lounge	5455 x 3300 mm
Kitchen/Family/Dining	5455 x 2966 mm
Utility	1742 x 1675 mm
WC	1497 x 935 mm

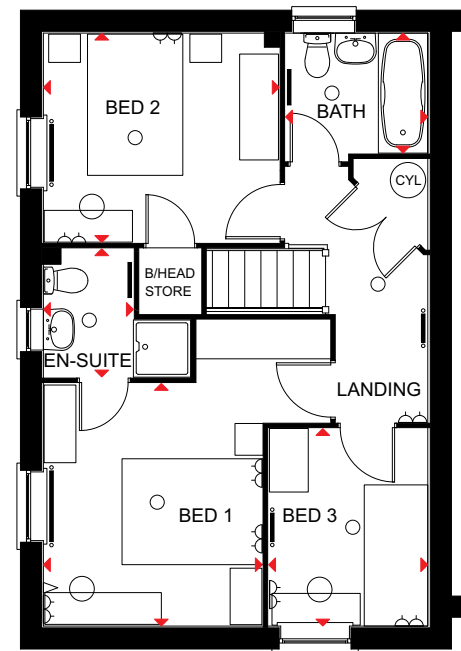
17'11" x 10'10"
17'11" x 9'9"
5'9" x 5'6"
4'11" x 3'1"

## First Floor

Bed 1	3438 x 3101 mm	11'3" x 10'2"
En-suite	1818 x 1275 mm	6'0" x 4'2"
Bed 2	3341 x 2966 mm	11'0" x 9'9"
Bed 3	2798 x 2265 mm	9'2" x 7'5"
Bath	2025 x 1700 mm	6'8" x 5'7"



Ground Floor



First Floor

- KEY**
- Light fitting
  - ◀ Telephone outlet point
  - Radiator
  - B Boiler
  - CYL Cylinder
  - wm Washing machine space
  - td Tumble dryer space
  - ⏏ Electric socket
  - △ T.V. aerial socket
  - Towel radiator
  - ST Store
  - f/f Fridge/freezer space
  - dw Dishwasher space
  - ◀▶ Dimension location

The company reserves the right to change floor layouts at any time. The computer generated image and floor plans are indicative only, to give a general indication of the proposed development and floor layout. The dimensions are accurate to within + or - 50mm. The exterior finishes may vary.



# The Fairway

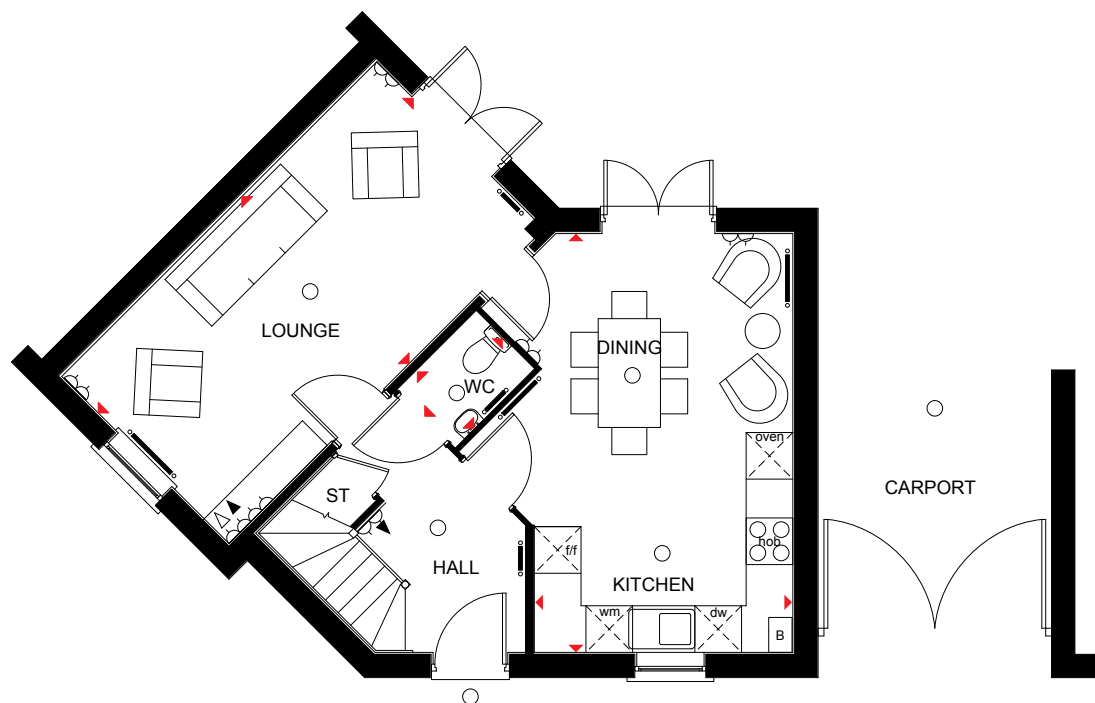
Three bedroom home

## Ground Floor

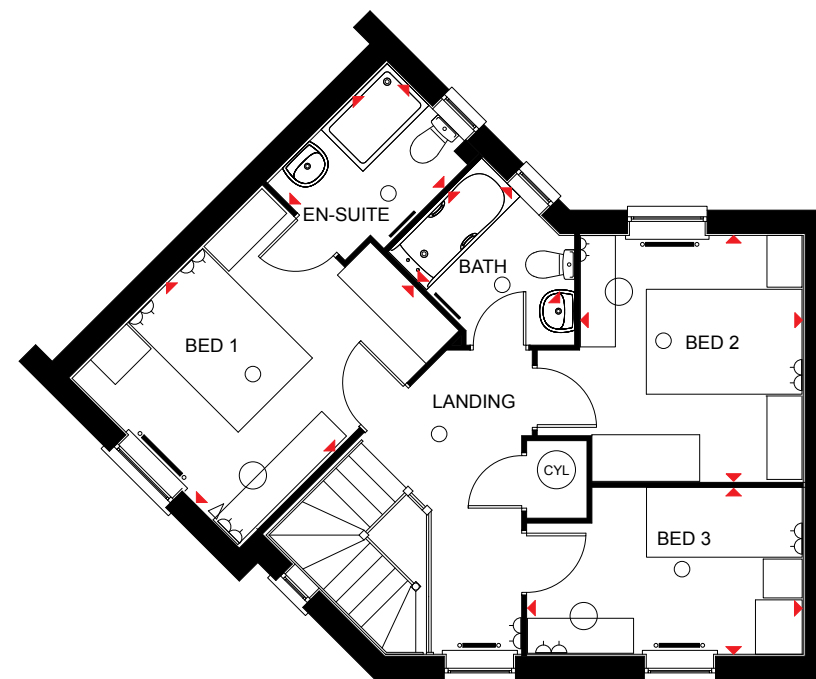
Lounge	5727 x 3050 mm	18'9" x 10'0"
Kitchen/Dining	5390 x 3300 mm	17'8" x 10'10"
WC	1419 x 1025 mm	4'8" x 3'4"

## First Floor

Bed 1	3050 x 3477 mm	10'0" x 11'5"
En-suite	2161 x 1650 mm	7'1" x 5'5"
Bed 2	3165 x 2851 mm	10'5" x 9'4"
Bed 3	3532 x 2136 mm	11'7" x 7'0"
Bath	2015 x 1700 mm	6'7" x 5'7"



Ground Floor



First Floor





# The Atherton

Three bedroom home

## Ground Floor

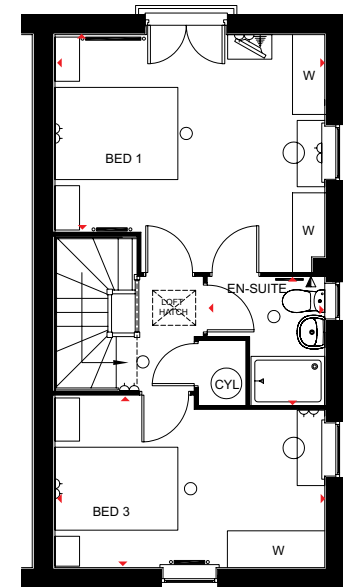
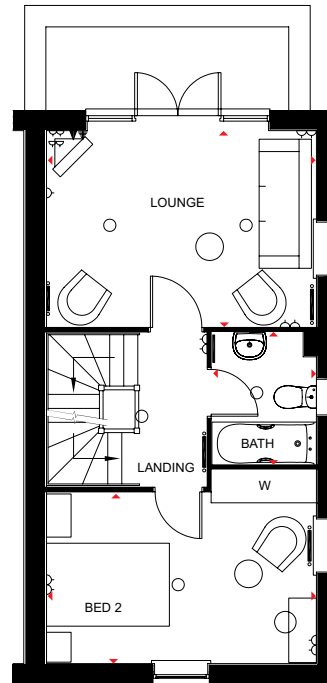
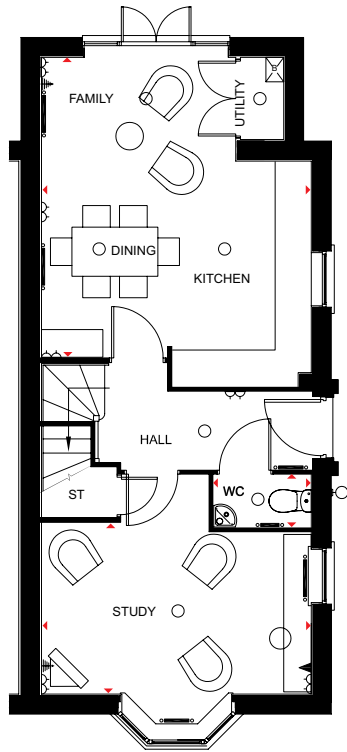
Study	4393 x 2783 mm	14'5" x 9'2"
Kitchen/Family/		
Dining	5358 x 4393 mm	17'7" x 14'5"
W.C.	1575 x 850 mm	5'2" x 2'9"

## First Floor

Lounge 4	393 x 3192 mm	14'5" x 10'6"
Bedroom 2	4393 x 3156 mm	14'5" x 10'4"
Bath	2152 x 1700 mm	7'1" x 5'7"

## Second Floor

Bedroom 1	3204 x 4393 mm	10'6" x 14'5"
En-suite	2077 x 1901 mm	6'10" x 6'3"
Bedroom 3	4393 x 2795 mm	14'5" x 9'2"



### Key

- Single switched socket outlet ▲ Double switched socket outlet ▲▲
- Ceiling Lighting ○ Telephone outlet ▲ TV aerial outlet △
- Radiator ———

The company reserves the right to change floor layouts at any time. The computer generated image and floor plans are indicative only, to give a general indication of the proposed development and floor layout. The dimensions are accurate to within + or - 50mm. The exterior finishes may vary.



# The Millwood

Four bedroom terraced home

## Ground Floor

Lounge/Dining	6254 x 4600 mm	20'6" x 15'1"
Kitchen/Breakfast	2480 x 3110 mm	8'2" x 10'2"
WC	1725 x 850 mm	5'8" x 2'9"

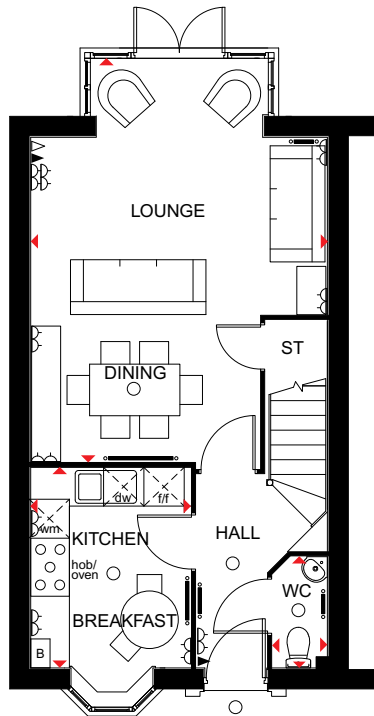
## First Floor

Bed 2	4346 x 2561 mm	14'3" x 8'5"
Bed 3	2561 x 3793 mm	8'5" x 12'5"
Bed 4	2747 x 1950 mm	9'0" x 6'5"
Bath	2111 x 1950 mm	6'11" x 6'5"

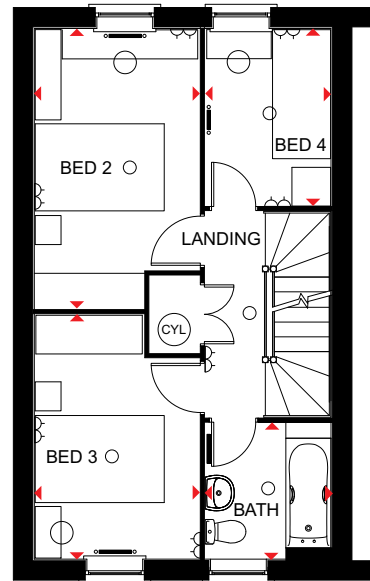
## Second Floor

Bed 1	5754* x 4600* mm	18'11"* x 15'1"*
Dressing	2831* x 2385* mm	9'3"* x 7'10"*
En-suite	2385* x 1680* mm	7'10"* x 5'6"*

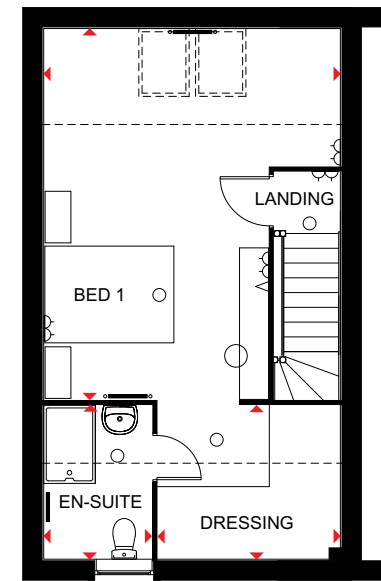
\* Overall floor dimension includes lowered ceiling areas



Ground Floor



First Floor



Second Floor

- KEY**
- Light fitting
  - ◀ Telephone outlet point
  - Radiator
  - B Boiler
  - CYL Cylinder
  - wm Washing machine space
  - ◻ Electric socket
  - ◁ T.V. aerial socket
  - Towel radiator
  - ST Store
  - fff Fridge/freezer space
  - dw Dishwasher space
  - ◄◄ Dimension location

The company reserves the right to change floor layouts at any time. The computer generated image and floor plans are indicative only, to give a general indication of the proposed development and floor layout. The dimensions are accurate to within + or - 50mm. The exterior finishes may vary.



# The Drummond

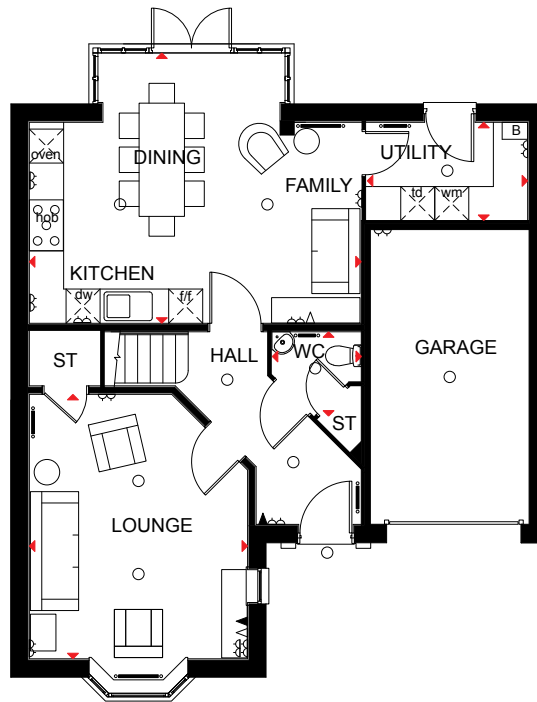
Four bedroom detached home

## Ground Floor

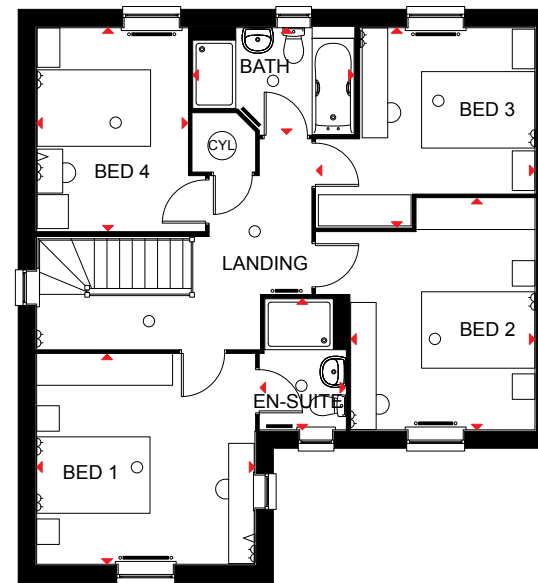
Lounge	3850 x 4671 mm	12'8" x 15'4"
Kitchen/Family/Dining	5855 x 4775 mm	19'3" x 15'8"
Utility	2846 x 1735 mm	9'4" x 5'8"
WC	1490 x 1575 mm	4'11" x 5'2"

## First Floor

Bed 1	3850 x 3711 mm	12'8" x 12'2"
En-suite	1511 x 2315 mm	4'11" x 7'7"
Bed 2	3251 x 4088 mm	10'8" x 13'5"
Bed 3	3858 x 3525 mm	12'8" x 11'7"
Bed 4	3589 x 2665 mm	11'9" x 8'9"
Bath	1886 x 2846 mm	6'2" x 9'4"



Ground Floor



First Floor

- KEY**
- Light fitting
  - ◀ Telephone outlet point
  - Radiator
  - B Boiler
  - CYL Cylinder
  - wm Washing machine space
  - td Tumble dryer space
  - ◻ Electric socket
  - ◁ T.V. aerial socket
  - Towel radiator
  - ST Store
  - f/f Fridge/freezer space
  - dw Dishwasher space
  - ◀▶ Dimension location

The company reserves the right to change floor layouts at any time. The computer generated image and floor plans are indicative only, to give a general indication of the proposed development and floor layout. The dimensions are accurate to within + or - 50mm. The exterior finishes may vary.



# The Shelbourne

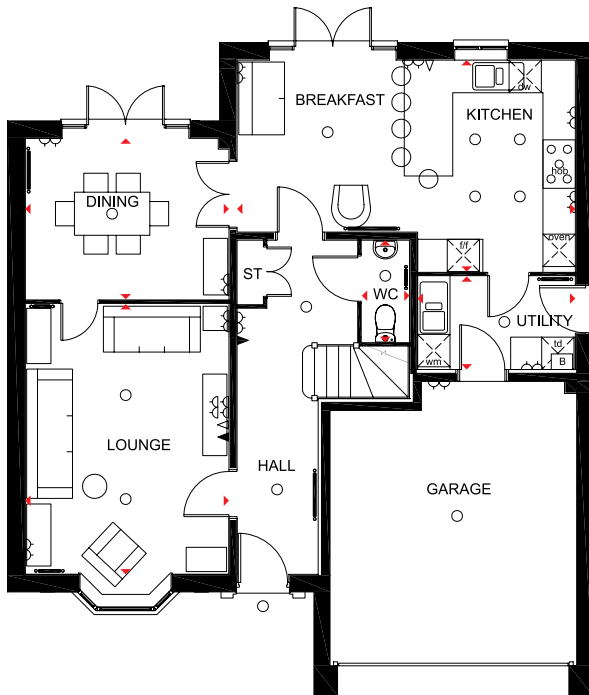
Four bedroom detached home

## Ground Floor

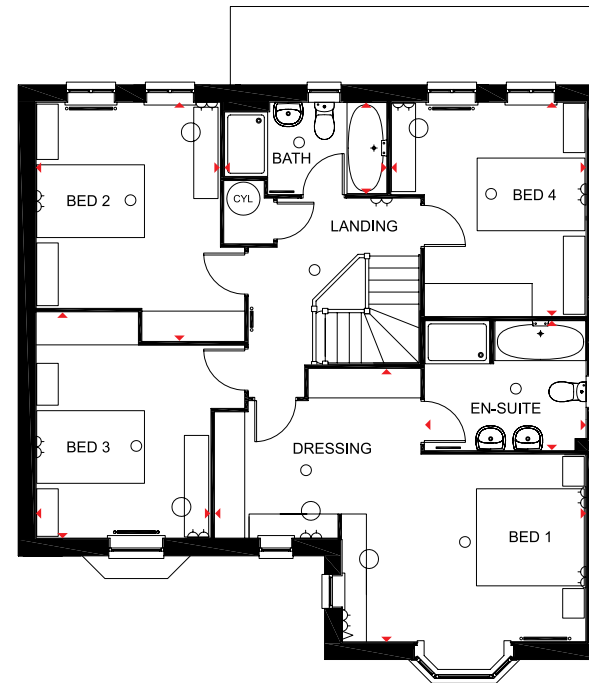
Lounge	3783 x 5015 mm	12'5" x 16'5"
Kitchen/Breakfast/Family	6277 x 3925 mm	20'7" x 12'11"
Dining	3783 x 2986 mm	12'5" x 9'10"
Utility	2910 x 1727 mm	9'7" x 5'8"
WC	1890 x 885 mm	6'2" x 2'11"

## First Floor

Bed 1/Dressing	6885 x 5066 mm	22'7" x 16'7"
Bathroom	2972 x 2801 mm	9'9" x 9'2"
Bed 2	4425 x 3411 mm	14'6" x 11'2"
Bed 3	3236 x 4190 mm	10'7" x 13'9"
Bed 4	4361 x 3611 mm	14'4" x 11'10"
Bath	3010 x 1700 mm	9'11" x 5'7"



Ground Floor



First Floor

- KEY**
- Light fitting
  - ◀ Telephone outlet point
  - Radiator
  - B Boiler
  - CYL Cylinder
  - wm Washing machine space
  - td Tumble dryer space
  - ◁ Electric socket
  - ◁ T.V. aerial socket
  - Towel radiator
  - ST Store
  - fff Fridge/freezer space
  - dw Dishwasher space
  - ↔ Dimension location

Computer generated images are for illustrative purposes only and individual features often vary from one plot to another. Floor plans are indicative only to give a general indication of the proposed development and floor layout. The dimensions are accurate to within + or -50mm. Dimensions should not be used for carpet sizes, appliance spaces or items of furniture. Please ask our Sales Advisers for details of the treatments specified for individual plots. Computer generated images are for general guidance only and are not intended to form part of any contract or warranty. Furniture shown is for illustrative purposes only. Computer generated image and photographs are for general guidance only and are not intended to form part of any contract or warranty.



# The Layton

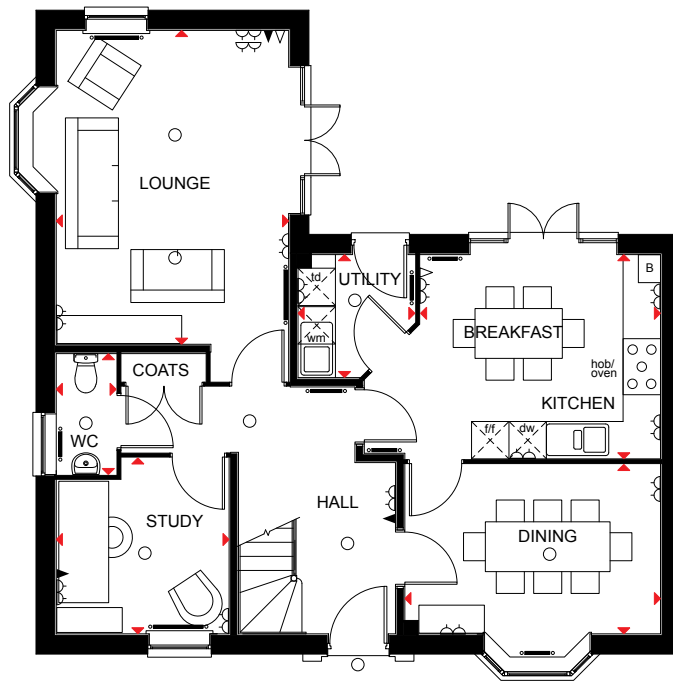
Four bedroom detached home

## Ground Floor

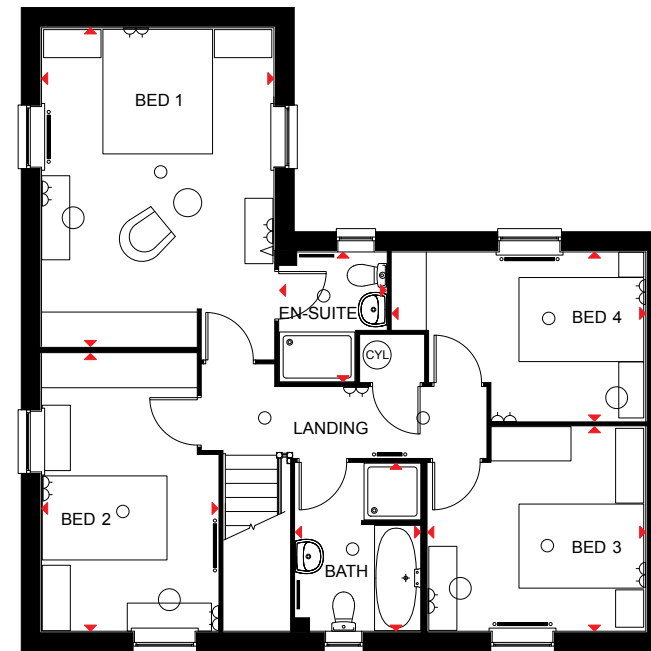
Lounge	5040 x 3727 mm	16'6" x 12'3"
Utility	1975 x 1875 mm	6'6" x 6'2"
Kitchen/Breakfast	3849 x 3280 mm	2'8" x 10'9"
Dining	4100 x 2721 mm	13'5" x 8'11"
Study	2772 x 2826 mm	9'1" x 9'3"
WC	1942 x 961 mm	6'4" x 3'2"

## First Floor

Bed 1	5119 x 3727 mm	16'10" x 12'3"
En-suite	1715 x 2085 mm	5'8" x 6'10"
Bed 2	4460 x 2833 mm	14'8" x 9'4"
Bed 3	3498 x 3285 mm	11'6" x 10'9"
Bed 4	4070 x 2716 mm	13'4" x 8'11"
Bath	2698 x 2010 mm	8'10" x 6'7"



Ground Floor



First Floor

- KEY**
- Light fitting
  - ◐ Electric socket
  - ◑ Telephone outlet point
  - ◒ T.V. aerial socket
  - Radiator
  - Towel radiator
  - B Boiler
  - ST Store
  - CYL Cylinder
  - f/f Fridge/freezer space
  - wm Washing machine space
  - dw Dishwasher space
  - td Tumble dryer space
  - ◄◄ Dimension location

The company reserves the right to change floor layouts at any time. The computer generated image and floor plans are indicative only, to give a general indication of the proposed development and floor layout. The dimensions are accurate to within + or - 50mm. The exterior finishes may vary.



# The Ashtree

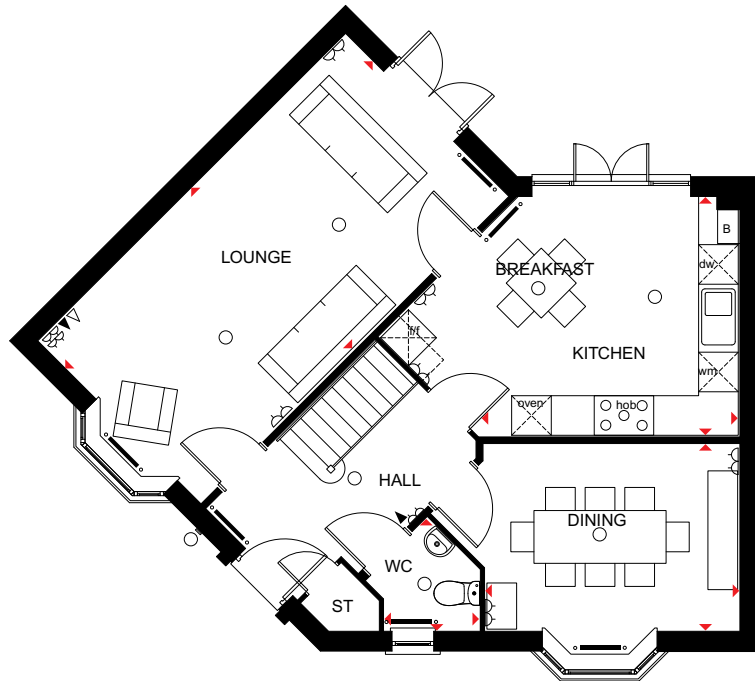
Four bedroom detached home

## Ground Floor

Lounge	3445 x 6540 mm	11'4" x 21'5"
Kitchen/Breakfast	3595 x 3938 mm	11'10" x 12'11"
Dining	3827 x 2795 mm	12'7" x 9'2"
WC	1440 x 1689 mm	4'9" x 5'6"

## First Floor

Bed 1	3415 x 4170 mm	11'2" x 13'8"
En-suite	1400 x 2281 mm	4'7" x 7'6"
Bed 2	3506 x 3711 mm	11'6" x 12'2"
Bed 3	4522 x 3725 mm	14'10" x 12'3"
Bed 4	2740 x 2521 mm	9'0" x 8'3"
Bath	2281 x 2613 mm	7'6" x 8'7"



Ground Floor



First Floor

<b>KEY</b>	○ Light fitting	◀ Telephone outlet point	—○— Radiator	B Boiler	CYL Cylinder	wm Washing machine space	◄► Dimension location
	◻ Electric socket	◁ T.V. aerial socket	—■— Towel radiator	ST Store	f/f Fridge/freezer space	dw Dishwasher space	

The company reserves the right to change floor layouts at any time. The computer generated image and floor plans are indicative only, to give a general indication of the proposed development and floor layout. The dimensions are accurate to within + or - 50mm. The exterior finishes may vary.



# The Holden

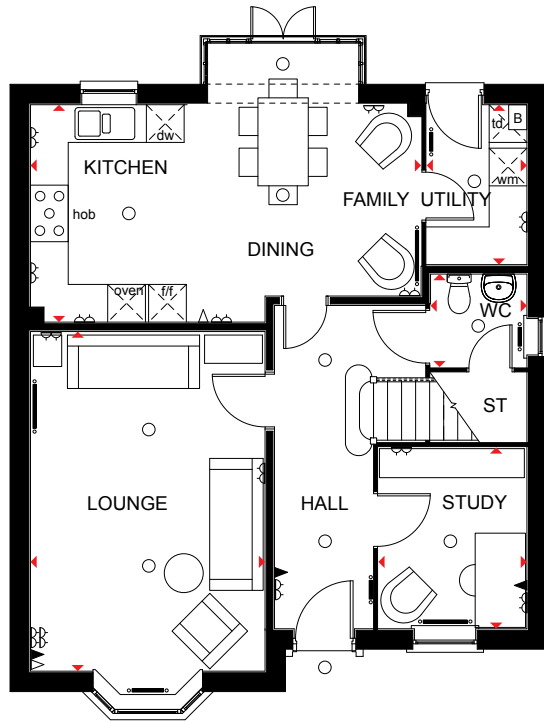
Four bedroom detached home

## Ground Floor

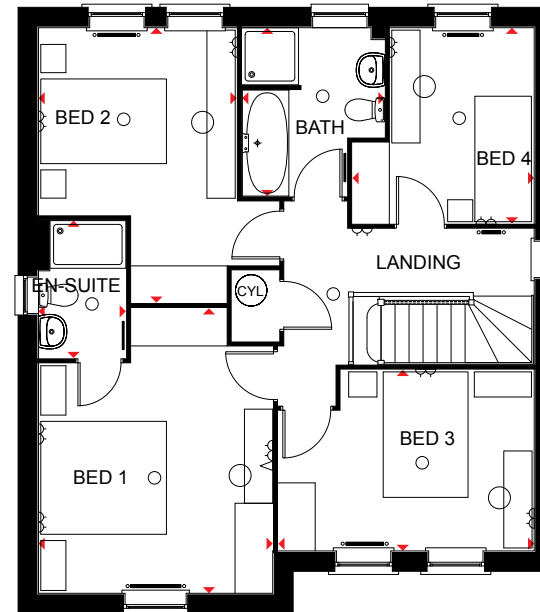
Lounge	3728 x 5405 mm	12'3" x 17'9"
Kitchen/Family/Dining	6208 x 4693mm max	20'4" x 15'4"
Study	2886 x 2361 mm	9'5" x 7'9"
Utility	2545 x 1593 mm	8'4" x 5'3"
WC	1532 x 1481 mm	5'0" x 4'10"

## First Floor

Bed 1	3728 x 4543 mm	12'3" x 14'11"
En-suite	1390 x 2190 mm	4'7" x 7'2"
Bed 2	3153 x 4384 mm	10'4" x 14'5"
Bed 3	2886 x 4073 mm	9'6" x 13'4"
Bed 4	3120 x 2893 mm	10'3" x 9'6"
Bath	2685 x 2266 mm	8'10" x 7'5"



Ground Floor



First Floor

- KEY**
- Light fitting
  - ◀ Telephone outlet point
  - Radiator
  - B Boiler
  - CYL Cylinder
  - wm Washing machine space
  - td Tumble dryer space
  - ◁ Electric socket
  - ◁ T.V. aerial socket
  - Towel radiator
  - ST Store
  - f/f Fridge/freezer space
  - dw Dishwasher space
  - ◄► Dimension location

The company reserves the right to change floor layouts at any time. The computer generated image and floor plans are indicative only, to give a general indication of the proposed development and floor layout. The dimensions are accurate to within + or - 50mm. The exterior finishes may vary.



# The Moorcroft

Five bedroom home

## Ground Floor

Lounge	5490 x 4290 mm	18'0" x 14'1"
Kitchen/Dining	6540 x 4100 mm	21'5" x 13'5"
Study	2840 x 2861 mm	9'4" x 9'5"
Utility	2425 x 1750 mm	7'11" x 5'9"
WC	1775 x 998 mm	5'10" x 3'3"

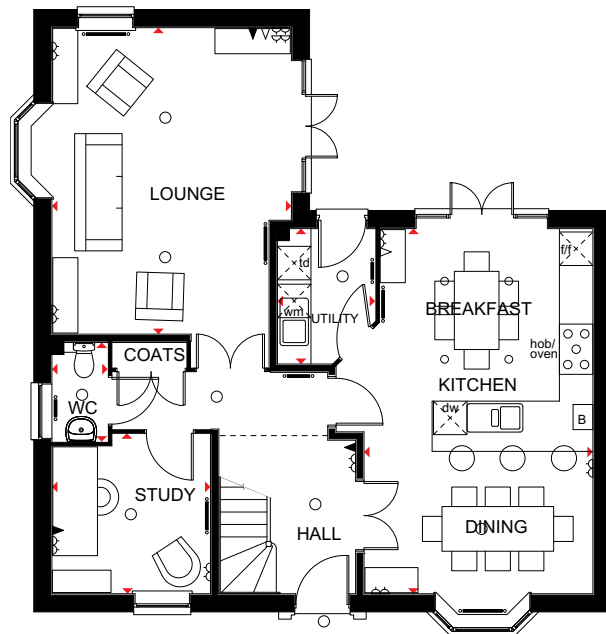
## First Floor

Bed 1	4290 x 3486 mm	14'1" x 11'5"
En-suite 1	2225 x 2525 mm	7'4" x 8'3"
Bed 3	2879 x 3929 mm	9'5" x 12'11"
Bed 4	3773 x 2711 mm	12'5" x 8'11"
Bed 5	3740 x 2798 mm	12'3" x 9'2"
Bath	2698 x 2124 mm	8'10" x 7'0"

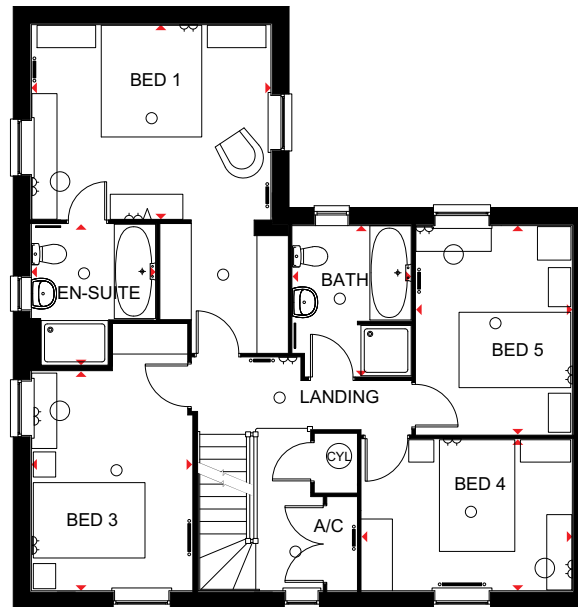
## Second Floor

Bed 2	5437 x 4790 * mm	17'10" x 15'9"*
Den	2940 * x 4525 mm	9'8" * x 14'10"*
En-suite 2	1437 * x 2289 mm	4'9" * x 7'6"*

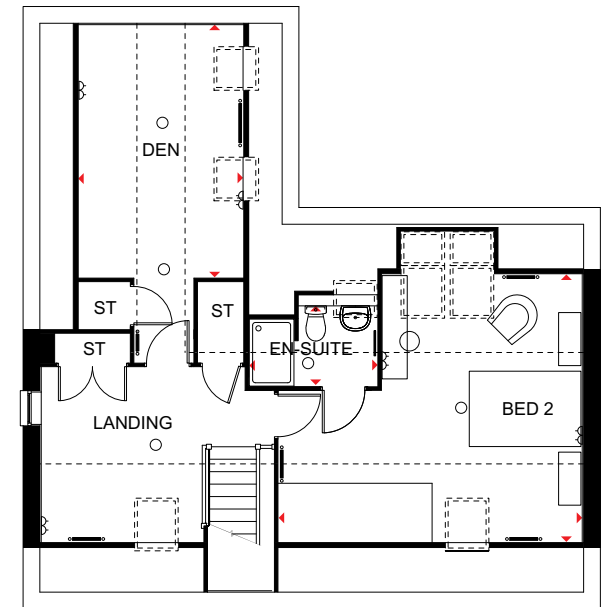
\* Overall floor dimension includes lowered ceiling areas



Ground Floor



First Floor



Second Floor

- KEY**
- Light fitting
  - ◀ Telephone outlet point
  - Radiator
  - B Boiler
  - CYL Cylinder
  - wm Washing machine space
  - td Tumble dryer space
  - ◁ Electric socket
  - ◁ T.V. aerial socket
  - Towel radiator
  - ST Store
  - fff Fridge/freezer space
  - dw Dishwasher space
  - ◄ Dimension location

The company reserves the right to change floor layouts at any time. The computer generated image and floor plans are indicative only, to give a general indication of the proposed development and floor layout. The dimensions are accurate to within + or - 50mm. The exterior finishes may vary.





# The Lichfield

Five bedroom detached home

## Ground Floor

Lounge	5084 x 4275 mm	16'8" x 14'0"
Kitchen/Family/		
Breakfast	3775 x 7115 mm	12'5" x 23'4"
Utility	2500 x 1675 mm	8'2" x 5'6"
Dining	3550 x 2994 mm	11'8" x 9'10"
Study	3605 x 2539 mm	11'10" x 8'4"
WC	1675 x 1016 mm	5'6" x 3'4"

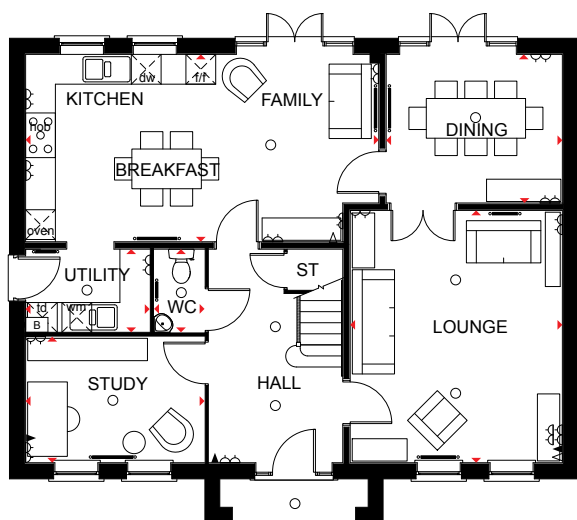
## First Floor

Bed 1	5084 x 4275 mm	16'8" x 14'0"
Dressing	2994 x 2249 mm	9'10" x 7'5"
En-suite	2994 x 2500 mm	9'10" x 8'2"
Bed 4	3848 x 4303 mm	12'8" x 14'1"
Bed 5	3509 x 4450 mm	11'6" x 14'7"
Bath 1	2268 x 2708 mm	7'5" x 8'11"

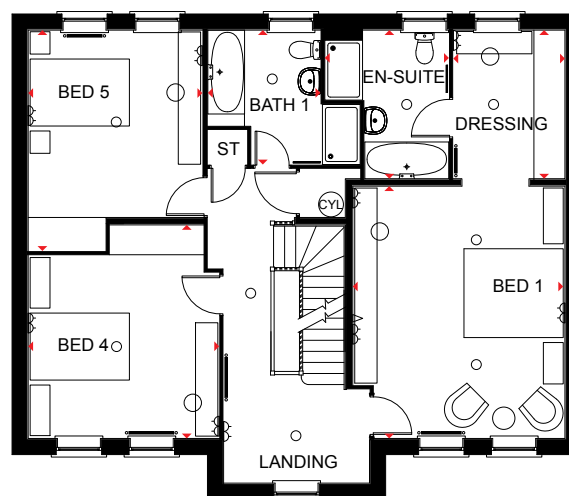
## Second Floor

Bed 2	5409* x 3465 mm	17'9"* x 11'4"
Bed 3	5409* x 4336 mm	17'9"* x 14'3"
Bath 2	1733* x 3715 mm	5'8"* x 12'2"

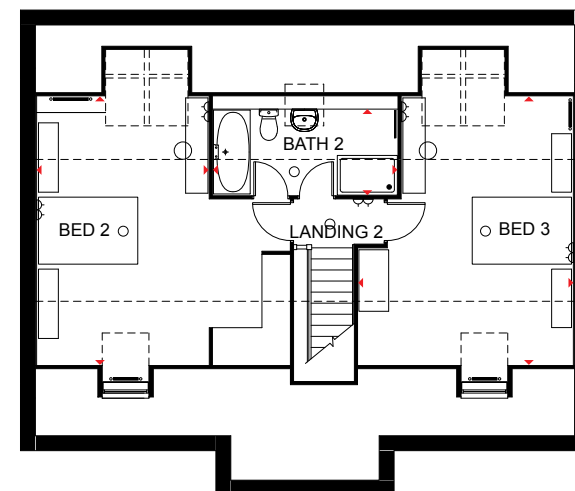
\*Overall floor dimension includes lowered ceiling areas



Ground Floor



First Floor



Second Floor

- KEY**
- Light fitting
  - ◀ Telephone outlet point
  - Radiator
  - B Boiler
  - CYL Cylinder
  - wm Washing machine space
  - ◁ Electric socket
  - ◁ T.V. aerial socket
  - Towel radiator
  - ST Store
  - f/f Fridge/freezer space
  - dw Dishwasher space
  - td Tumble dryer space
  - ◀▶ Dimension location

The company reserves the right to change floor layouts at any time. The computer generated image and floor plans are indicative only, to give a general indication of the proposed development and floor layout. The dimensions are accurate to within + or - 50mm. The exterior finishes may vary.



# The Buckingham

Five bedroom detached home

## Ground Floor

Lounge	5050 x 3750 mm	16'7" x 12'4"
Kitchen/Family	6130 x 4151 mm	20'1" x 13'7"
Dining	3201 x 3100 mm	10'6" x 10'2"
Study	3006 x 2850 mm	9'10" x 9'4"
Utility	1861 x 1595 mm	6'1" x 5'3"
WC	1595 x 900 mm	5'3" x 2'11"

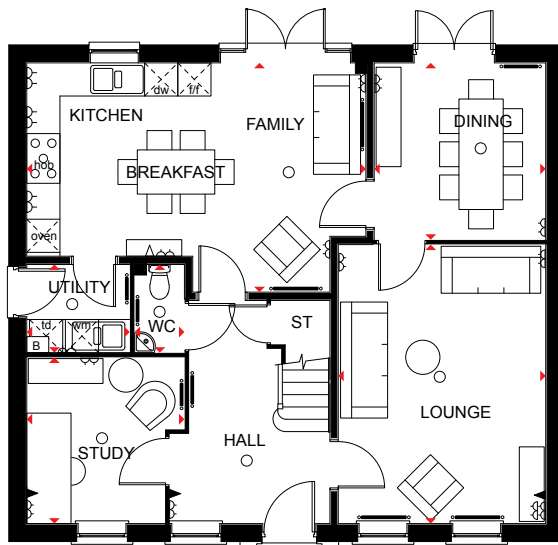
## First Floor

Bed 1	5037 x 3802 mm	16'6" x 12'6"
Dressing	3214 x 1898 mm	10'7" x 6'3"
En-suite	1989 x 3214 mm	6'6" x 10'7"
Bed 4	4730 x 3235 mm	15'6" x 10'7"
Bed 5	3521 x 3486 mm	11'7" x 11'5"
Bath 1	1969 x 3214 mm	6'6" x 10'7"

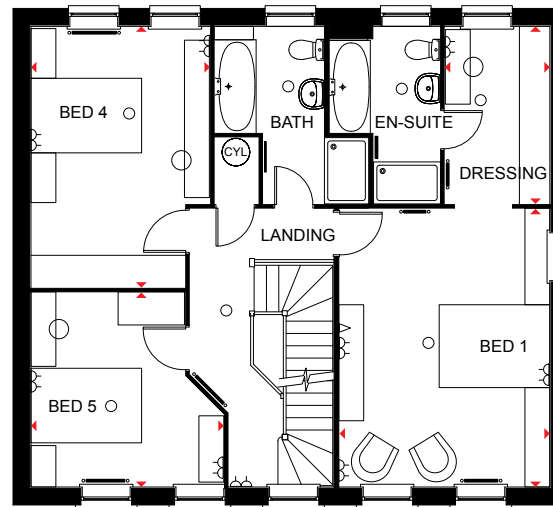
## Second Floor

Bed 2	5762* x 3301 mm	18'11"* x 10'10"
Bed 3	5762* x 4101 mm	18'11"* x 13'5"
Bath 2	2575 x 2266* mm	8'5" x 7'5"*

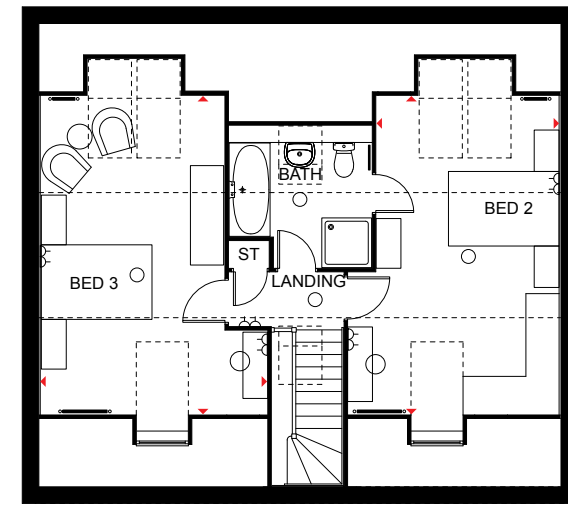
\* Overall floor dimension includes lowered ceiling areas



Ground Floor



First Floor



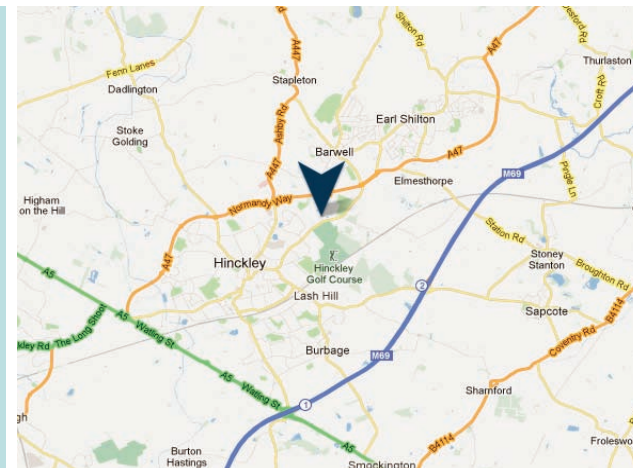
Second Floor

<b>KEY</b>	○ Light fitting	◀ Telephone outlet point	— Radiator	B Boiler	CYL Cylinder	wm Washing machine space	td Tumble dryer space
	◁ Electric socket	◁ T.V. aerial socket	— Towel radiator	ST Store	f/f Fridge/freezer space	dw Dishwasher space	◀▶ Dimension location

The company reserves the right to change floor layouts at any time. The computer generated image and floor plans are indicative only, to give a general indication of the proposed development and floor layout. The dimensions are accurate to within + or - 50mm. The exterior finishes may vary.

The Greens  
Leicester Road  
Hinckley  
LE10 3DR

0844 811 5544



[www.dwh.co.uk](http://www.dwh.co.uk)

This brochure and all the information detailed therein does not and will not constitute any part of any offer or contract, or be a representation inducing such a contract. This brochure and all photographs, illustrations, plans and sizes are indicative only to give a general indication of the proposed development and floor layouts. We aim to ensure that the room dimensions printed are correct to either 75mm (3") more or less than the actual dimension. David Wilson Homes operates a policy of continuous product development, therefore some features, specification and elevational treatments may vary at the discretion of David Wilson Homes.

David Wilson Homes reserves the right to alter any part of the development. None of the statements and information contained in this brochure are to be relied upon as statements or representations of fact, and any intending purchaser must satisfy him/herself by inspection or otherwise as to the correctness of any statement. Any intending purchaser is advised to contact David Wilson Homes to ascertain the availability of any type of property.



*Where quality lives*

**David Wilson Homes**