



Stanstead Abbots

Hertfordshire, SG12

Guide price £895,000



Steven Oates



4 Louisville Close Stanstead Abbots, Hertfordshire, SG12 8DE

Description

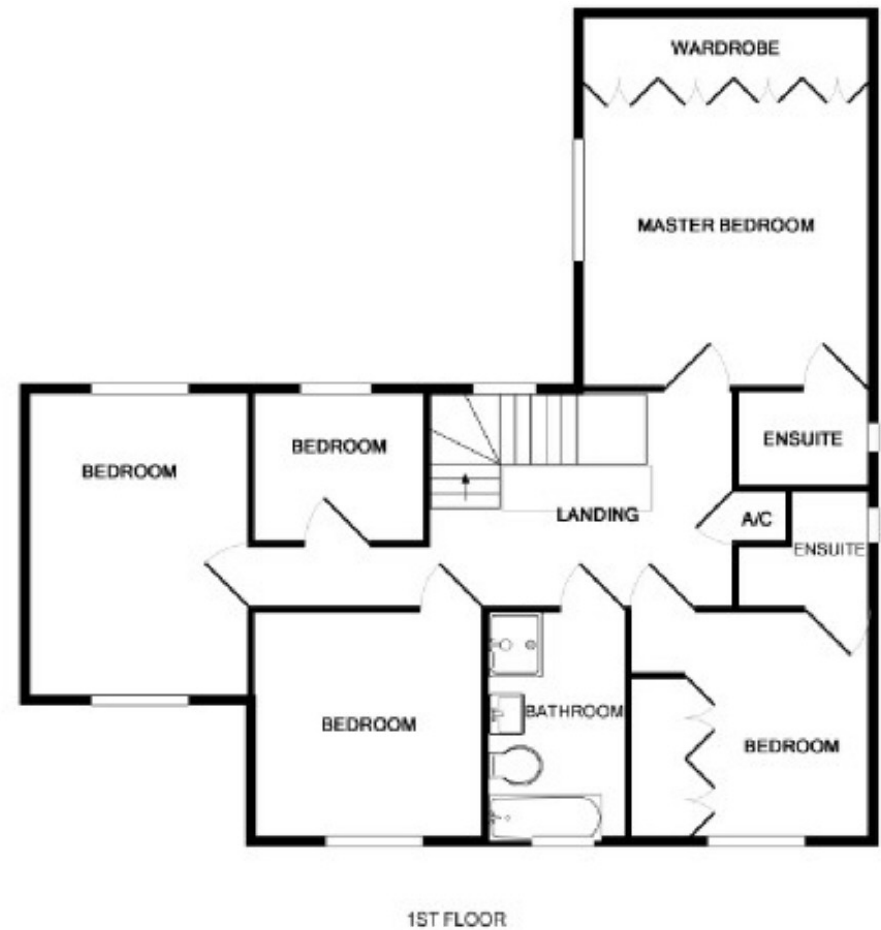
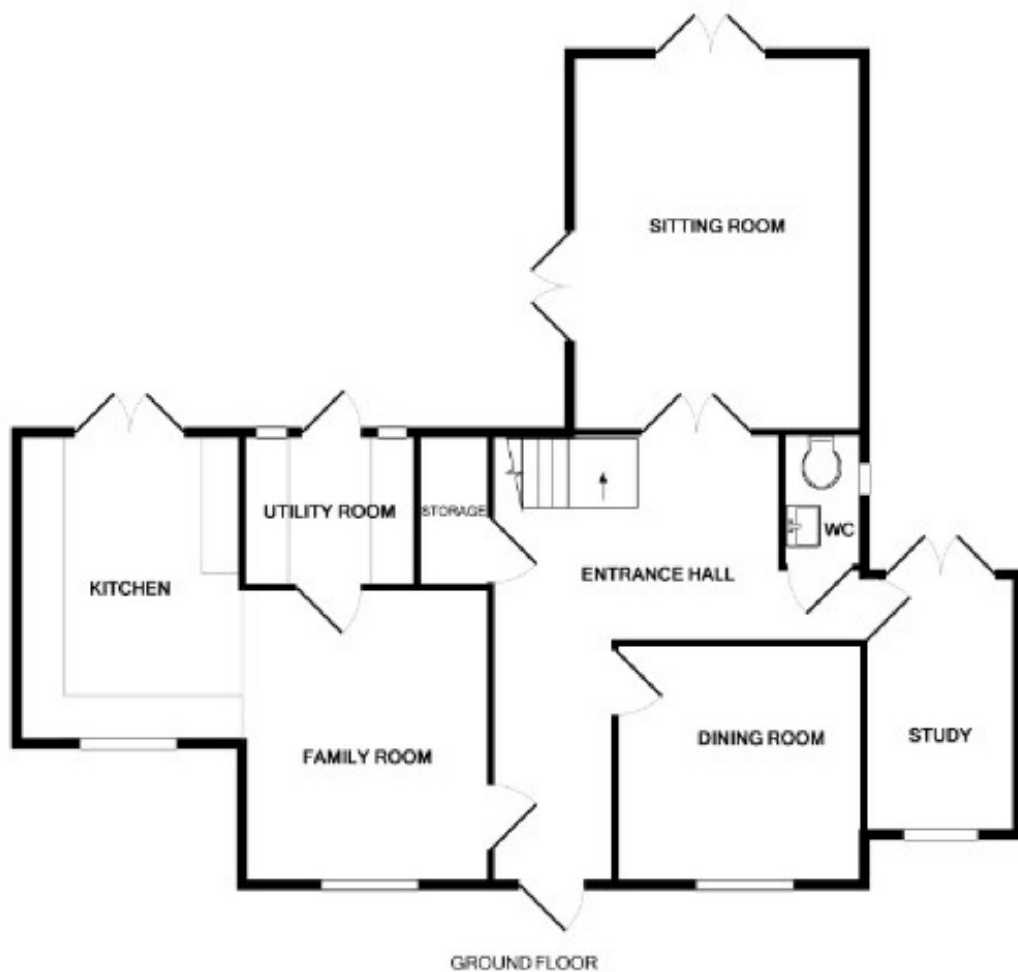
A magnificent five bedroom detached family home positioned perfectly within this exclusive cul-de-sac in the popular village of Stanstead Abbots. The property is immaculately presented and offers fantastic living accommodation throughout including a detached double garage and driveway. An early viewing is recommended!

Location

Louisville Close is an exceptional development of just four exclusive homes and the property is located just a minutes walk from St Margarets British Rail Station and all of Stanstead Abbots local amenities.



21 High Street, Ware, Hertfordshire, SG12 9BN 01920 330330



Whilst every attempt has been made to ensure the accuracy of the floor plan contained here, measurements of doors, windows, rooms and any other items are approximate and no responsibility is taken for any error, omission, or mis-statement. This plan is for illustrative purposes only and should be used as such by any prospective purchaser. The services, systems and appliances shown have not been tested and no guarantee as to their operability or efficiency can be given.
 Made with Metropix ©2015

Whilst we endeavour to make our sales particulars fair, accurate and reliable, they are only intended as a general guide to the property. Measurements and distances are approximate. These particulars do not form part of any offer or contract. If there are important matters that are likely to affect your decision to buy, please contact us before viewing the property. Please note that we have not tested the services, equipment or appliances in this property, accordingly, we advise prospective buyers to commission their own survey or service reports before finalising any offer to purchase.





